

CD

JAPAN

Albums
Box Sets
Sampler
Singles
Promotional Releases

PINK FLOYD CD DISCOGRAPHY

Copyright © 2003-2011 Hans Gerlitz. All rights reserved.
www.pinkfloyd-forum.de/discography
hans.gerlitz@gmx.de

This discography is a reference guide, not a book on the artwork of Pink Floyd. The photos of the artworks are used solely for the purposes of distinguishing the differences between the releases. The product names used in this document are for identification purposes only. All trademarks and registered trademarks are the property of their respective owners.

Permission is granted to download and print this document for personal use.
Any other use including but not limited to commercial or profitable purposes or uploading to any publicly accessible web site is expressly forbidden without prior written consent of the author.

PINK FLOYD CD DISCOGRAPHY

JAPAN Albums

The Piper at the Gates of Dawn



Label: EMI

Catalog numbers:

CP32-5269 (on case spine and obi)

T4988 006 60917 4 (barcode on obi)

CDP 7 46384 2 (on CD)

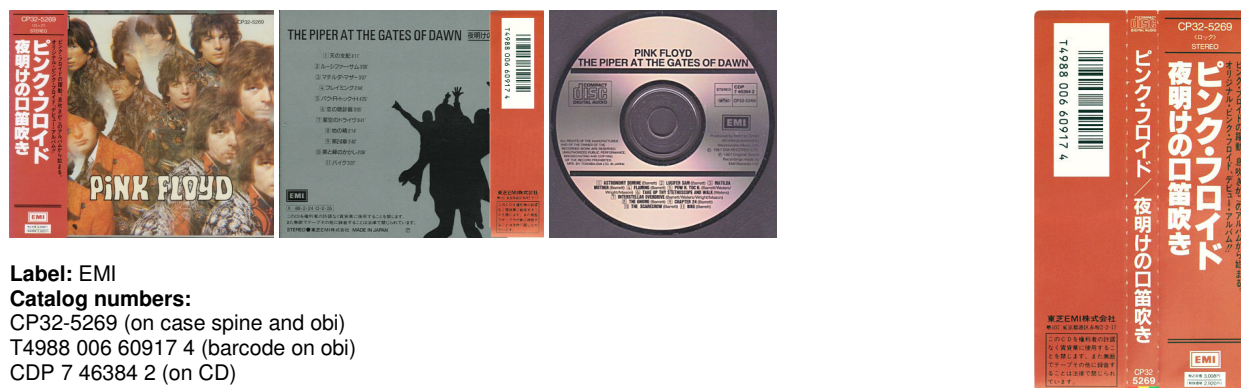
CP32-5269 (on CD)

Country of origin: Japan

Release date: February 25, 1987

Notes: Issued in a standard jewel case with a 4 page booklet, an additional 8 page Japanese fold out and an obi. On the rear cover (on the bottom line, to the right of "Made in Japan") is the price (¥3,200). The price is also listed on the last page of booklet.

The Piper at the Gates of Dawn



Label: EMI

Catalog numbers:

CP32-5269 (on case spine and obi)

T4988 006 60917 4 (barcode on obi)

CDP 7 46384 2 (on CD)

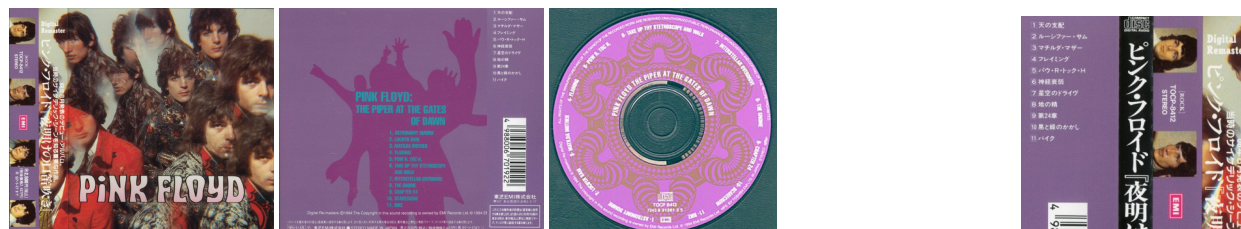
CP32-5269 (on CD)

Country of origin: Japan

Release date: 1988

Notes: Reissue with the same catalog number but with a new price and slight differences in obi details. Issued in a standard jewel case with a 4 page booklet, an additional 8 page Japanese fold out and an obi. The price is not listed on the rear cover and on the last page of booklet.

The Piper at the Gates of Dawn



Label: Toshiba-EMI

Catalog numbers:

TOCP-8412 (on case spine and obi)

4 988006 701922 (barcode on obi)

TOCP 8412 and 7243 8 31261 2 5 (on CD)

Country of origin: Japan

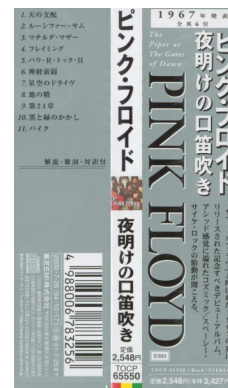
Release date: 1994

Notes: Issued in a standard jewel case with a 24 page booklet, an additional 4 page Japanese booklet and an obi.

The Piper at the Gates of Dawn



Label: Toshiba-EMI
Catalog numbers:
 TOCP-65550 (on case spine and obi)
 4 988006 783256 (barcode on obi)
 TOCP-65550 (7243 8 31261 2 5) (on CD)
Country of origin: Japan
Release date: July 26, 2000
Notes: Issued in a standard jewel case with an obi. Includes booklet and Japanese paper insert.

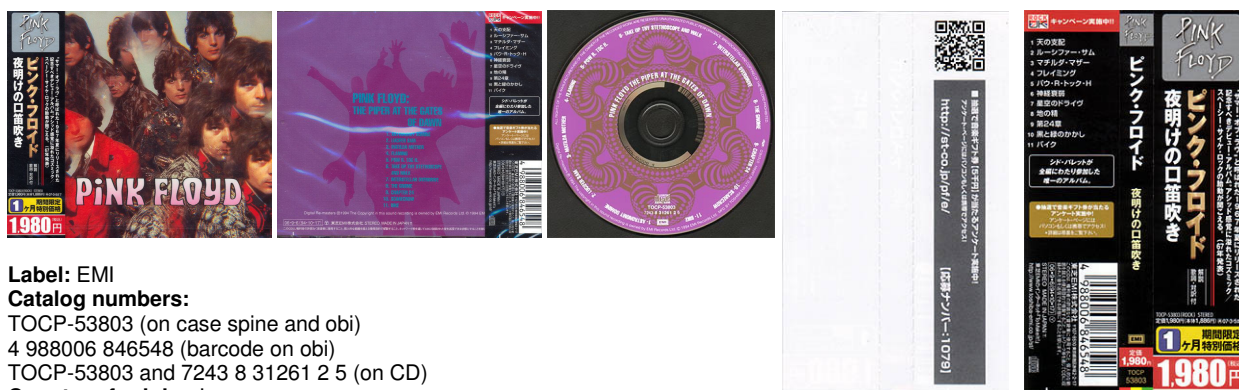


The Piper at the Gates of Dawn



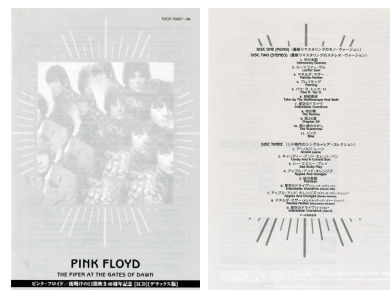
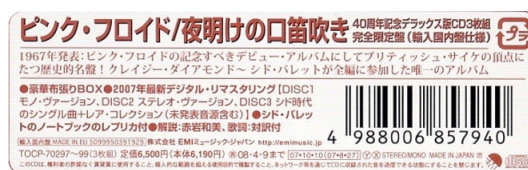
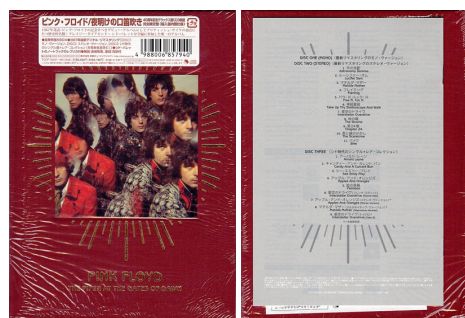
Label: Toshiba-EMI
Catalog numbers:
 TOCP-65731 (on spine, obi and CD)
 4 988006 791695 (barcode on obi)
Country of origin: Japan
Release date: May 30, 2001
Notes: Issued in a mini LP sleeve with flipback rear. Issued with an obi, inner sleeve and paper inserts. For complete content description and further details see also 'Appendix: Cardboard Sleeve LP Replica'.

The Piper at the Gates of Dawn



Label: EMI
Catalog numbers:
 TOCP-53803 (on case spine and obi)
 4 988006 846548 (barcode on obi)
 TOCP-53803 and 7243 8 31261 2 5 (on CD)
Country of origin: Japan
Release date: September 6, 2006
Notes: Remastered reissue under the "Rock UK" series. Issued in a standard case with an obi, booklet and a Japanese paper insert. The obi has an additional info printed on the rear (shown).

The Piper at the Gates of Dawn



Additional Japanese booklet

Label: EMI

Catalog numbers:

TOCP-70297~ 99 and 5099950391929 (on Japanese front sticker)

4 988006 857940 (barcode on Japanese front sticker)

5 099950 391929 (barcode on rear sticker)

50999 5 03919 2 9 (on rear sticker)

50999-503919-2-9 (on rear cover)

50999 5 03919 2 9 and LC 0542 (on CD 1)

50999 5 03919 2 9 and LC 0542 (on CD 2)

50999 5 03919 2 9 and LC 0542 (on CD 3)

Country of origin: Artwork and CDs: EU, front sticker and additional booklet: Japan

Notes: 40th anniversary limited edition, digitally remastered 2007. This is the European edition with the Japanese add-ons (sticker + booklet). Issued in a cloth-bound hardback 16 page book with an additional 16 page booklet with reprints of the Syd diaries ("Syd Booklet") and an 16 page Japanese b/w booklet. Includes mono version of the album on disc 1 and stereo version on disc 2. Bonus disc includes tracks from singles and some previously unreleased tracks. "MADE IN EU." printed on rear and on the Japanese front sticker. "Made in EU." and "SDRM/biem" printed on CD's

The Piper at the Gates of Dawn



Label: EMI

Catalog numbers:

TOCP-70300-01 (on case spine)

4 988006 857957 (barcode on rear of obi)

TOCP-70300 and (50999 508602 2 7) (on CD 1)

TOCP-70301 and (50999 508603 2 6) (on CD 1)

Country of origin: Japan

Release date: October 10, 2007

Notes: 40th anniversary edition. Digitally remastered 2007. Issued in a double slimline case with a 16 page booklet, a 12 page Japanese b/w additional booklet and an obi. Includes mono version of the album on disc 1 and stereo version on disc 2.

The Piper at the Gates of Dawn Discovery Edition



Label: EMI Music Japan Inc.

Catalog numbers:

TOCP-71131/71147 (on case spine)

4 988006 887312 (barcode on obi)

TOCP-71131 (on obi)

TOCP-71131/71147 (on CD)

Country of origin: Japan

Release date: September, 2011

Notes: Issued in a glossy gatefold cardboard sleeve with a 12 page re-designed booklet and Japanese insert. Digitally remastered by James Guthrie and Joel Plante at das boot recording in 2011. Includes CD text (band name, album title, song title, composer). CD in plastic inner sleeve. Obi.

It was also sold as a part of the Discovery box.



A Saucerful of Secrets



Label: EMI

Catalog numbers:

CP32-5272 (on case spine and obi)

T4988 006 20 (barcode on obi)

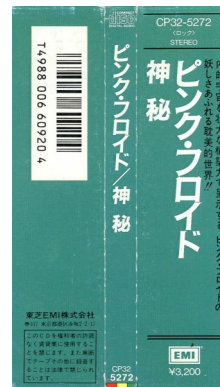
CDP 7 46383 2 (on CD)

CP32-5272 (on CD)

Release date: February 25, 1987

Country of origin: Japan

Notes: Issued in a standard jewel case with a 4 page booklet, an additional 8 page Japanese fold out and an obi. On the rear cover (on the bottom line, to the right of "Made in Japan") is the price (¥3,200). The price is also listed on the last page of booklet.



A Saucerful of Secrets



Label: EMI

Catalog numbers:

CP32-5272 (on case spine and obi)

T4988 006 20 (barcode on obi)

CDP 7 46383 2 (on CD)

CP32-5272 (on CD)

Country of origin: Japan

Release date: 1988

Notes: Reissue with the same catalog number but with a new price and slight differences in obi details. The price is not listed on the rear cover and on the last page of booklet.

A Saucerful of Secrets



Label: Toshiba-EMI

Catalog numbers:

TOCP-8253 (on case spine and obi)

4 988006 696129 (barcode on obi)

Country of origin: Japan

Release date: September 21, 1994

Notes: Issued in a standard jewel case with a 16 page booklet, an additional 4 page Japanese fold out and an obi.



A Saucerful of Secrets



Label: Toshiba-EMI

Catalog numbers:

TOCP-65551 (on case spine and obi)

4 988 006 783263 (barcode on obi)

TOCP-65551 CDP 8297512 (on CD)

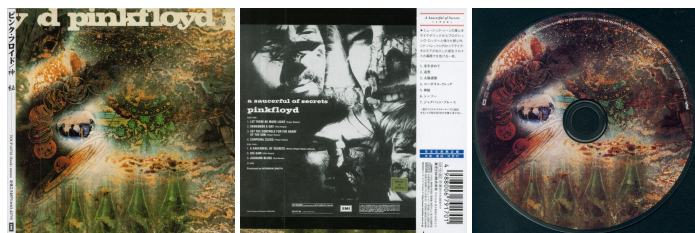
Release date: July 26, 2000

Country of origin: Japan

Notes: Issued in a standard jewel case with a booklet, a Japanese paper insert and an obi.



A Saucerful of Secrets



Label: Toshiba-EMI

Catalog numbers:

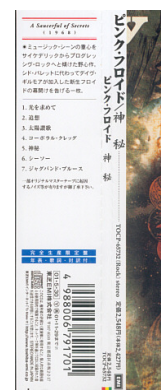
TOCP-65732 (on spine, obi and CD)

4 988006 791701 (barcode on obi)

Country of origin: Japan

Release date: May 30, 2001

Notes: Issued in a mini LP sleeve with flipback rear. Issued with an obi, inner sleeve and paper inserts. For complete content description and further details see also 'Appendix: Cardboard Sleeve LP Replica'.



A Saucerful of Secrets



Label: EMI

Catalog numbers:

TOCP-53804 (on case spine and obi)

4 988006 846555 (barcode on obi)

TOCP-53804 and CDP 8297512 (on CD)

Country of origin: Japan

Release date: September 6, 2006

Notes: Remastered reissue under the "Rock UK" series. Issued in a standard case with an obi, 16 page booklet and a Japanese fold out insert with "The Piper At The Gates Of Dawn" on back catalogue. The obi has an additional info printed on the rear (shown). "ROCK UK ..." on red rectangle printed on top on rear of the obi.



A Saucerful of Secrets



Label: EMI

Catalog numbers:

TOCP-53804 (on case spine and obi)

4 988006 846555 (barcode on obi)

TOCP-53804 and CDP 8297512 (on CD)

Country of origin: Japan

Release date: October 31, 2007.

Notes: 2007 reissue under the "EMI 100" series. Issued in a standard case with an obi, 16 page booklet and a Japanese fold out insert without "The Piper At The Gates Of Dawn" on back catalogue. The obi has an additional info printed on the rear (shown).

"EMI 100 ..." on gold rectangle printed on top on rear of the obi. White tray.



A Saucerful of Secrets



Label: EMI

Catalog numbers:

TOCP-53804 (on case spine and obi)

4 988006 846555 (barcode on rear obi)

TOCP-53804 (CDP 8297512) (on CD)

Country of origin: Japan

Release date: December 2009

Notes: 2009 reissue in a standard jewel case with a 16 page booklet and a Japanese 8 page b/w fold out insert. 1992 remaster.

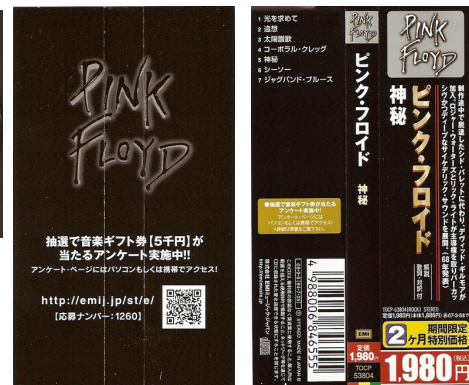
"MFD. BY EMI MUSIC JAPAN INC. IN JAPAN." printed on the CD. Catalogue number "(CDP 8297512)" printed in brackets.

"MADE IN JAPAN" printed on rear cover and obi. "...1,980 ... (... 1,886 ...)" printed on obi. Rear of obi printed in black. "2ヶ月

期間限定 特別価格" printed in the yellow rectangle on obi (translated: Limited time special price for 2 months). White tray.

Additional Japanese insert without back catalogue.

Re-released in December 2010 with the same artwork and catalogue numbers.



A Saucerful of Secrets Discovery Edition

Label: EMI Music Japan Inc.

Catalog numbers:

TOCP-71132/71148 (on case spine)

4 988006 887329 (barcode on obi)

TOCP-71132 (on obi)

TOCP-71132/71148 (on CD)

Country of origin: Japan

Release date: September, 2011

Notes: Issued in a glossy gatefold cardboard sleeve with a 12 page re-designed booklet and Japanese insert. Digitally remastered by James Guthrie and Joel Plante at das boot recording in 2011. Includes CD text (band name, album title, song title, composer). CD in plastic inner sleeve. Obi.

It was also sold as a part of the Discovery box.

**More**

Label: EMI

Catalog numbers:

CP32-5273 (on case spine and obi)

T4988 006 60921 1 (barcode on obi)

Country of origin: Japan

Release date: April 6, 1987

Notes: Issued in a standard jewel case with a 4 page booklet, an additional 8 page Japanese fold out and an obi. On the rear cover (on the bottom line, to the right of "Made in Japan") is the price (¥3,200). The price is also listed on the last page of booklet.

**More**

Label: EMI

Catalog numbers:

CP32-5273 (on case spine and obi)

T4988 006 60921 1 (barcode on obi)

Country of origin: Japan

Release date: 1988

Notes: Reissue with the same catalog number but with a new price and slight differences in obi details. Issued in a standard jewel case with a 4 page booklet, an additional 8 page Japanese fold out and an obi. The price is not listed on the rear cover and on the last page of booklet.



More



Label: Toshiba-EMI

Catalog numbers:

TOCP-8791 (on case spine and obi)

4 988006 715547 (barcode on obi)

Country of origin: Japan

Release date: March 27, 1996

Notes: Issued in a standard jewel case with a 20 page booklet, an additional 2 page Japanese fold out and an obi.



More



Label: Toshiba-EMI

Catalog numbers:

TOCP-65552 (on case spine and obi)

4 988006 783270 (barcode on obi)

Release date: July 26, 2000

Country of origin: Japan



More



Label: Toshiba-EMI

Catalog numbers:

TOCP-65733 (on spine, obi and CD)

4 988006 791718 (barcode on obi)

Country of origin: Japan

Release date: June 16, 2001

Notes: Issued in a mini LP sleeve with flipback rear Issued with an obi, inner sleeve and paper inserts. For complete content description and further details see also 'Appendix: Cardboard Sleeve LP Replica'.



More



Label: EMI

Catalog numbers:

TOCP-53976 (on case spine and obi)

4 988006 859241 (barcode on obi)

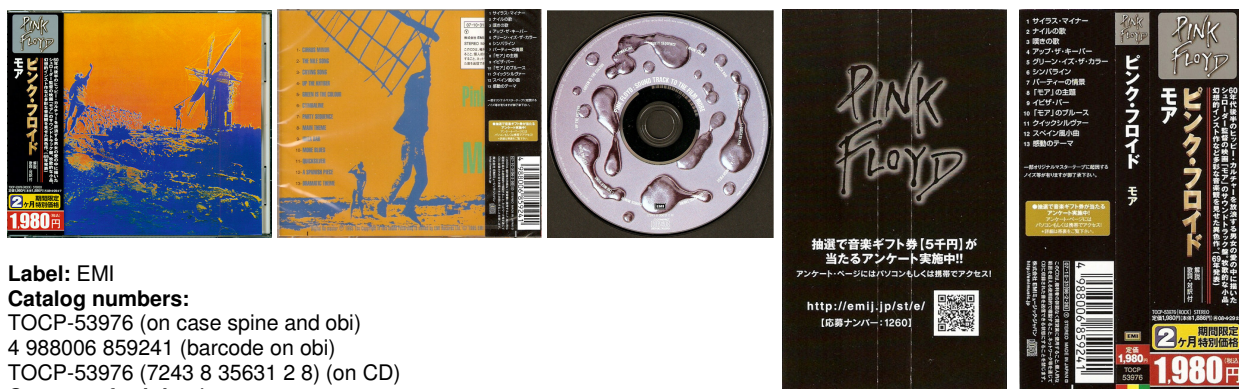
TOCP-53976 (7243 8 35631 2 8) (on CD)

Country of origin: Japan

Release date: October 31, 2007

Notes: 2007 reissue. Issued in a standard case with an obi, 20 page booklet and a Japanese 8 page b/w fold out insert. The obi has an additional info printed on the rear (shown). White tray.

More



Label: EMI

Catalog numbers:

TOCP-53976 (on case spine and obi)

4 988006 859241 (barcode on obi)

TOCP-53976 (7243 8 35631 2 8) (on CD)

Country of origin: Japan

Release date: December 2009

Notes: 2009 reissue in a standard jewel case with a 20 page booklet and a Japanese 8 page b/w fold out insert. 1995 remaster.

"Mfd. by EMI Music Japan Inc. in Japan." printed on the CD. "MADE IN JAPAN" printed on rear cover and obi. "...1,980 ... (... 1,886 ...)" printed on obi. Rear of obi printed in black. "2ヶ月 期間限定 特別価格" printed in the yellow rectangle on obi (translated:

Limited time special price for 2 months). White tray. Additional Japanese insert without back catalogue.

Re-released in December 2010 with the same artwork and catalogue numbers.

More Discovery Edition



Label: EMI Music Japan Inc.

Catalog numbers:

TOCP-7133/71149 (on case spine)

4 988006 887336 (barcode on obi)

TOCP-71133 (on obi)

TOCP-7133/71149 (on CD)

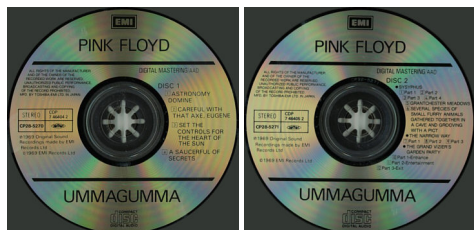
Country of origin: Japan

Release date: September, 2011

Notes: Issued in a glossy gatefold cardboard sleeve with a 12 page re-designed booklet and Japanese insert. Digitally remastered by James Guthrie and Joel Plante at das boot recording in 2011. Includes CD text (band name, album title, song title, composer). CD in plastic inner sleeve. Obi.

It was also sold as a part of the Discovery box.

Ummagumma



Label: EMI

Catalog numbers:

CP28-5270.71 (on case spine and obi)

T4988 006 61016 3 (barcode)

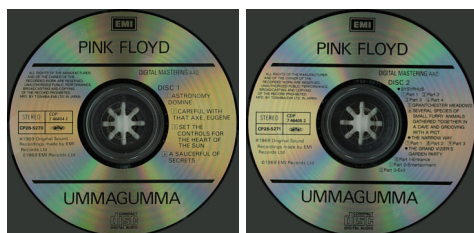
Country of origin: Japan

Release date: April 22, 1987

Notes: Issued in a thick box with a 8 page booklet, an additional 16 page Japanese fold-out insert and an obi. On the rear cover (on the bottom line, to the right of "Made in Japan") is the price (¥5,600). The price is also listed on the last page of booklet.



Ummagumma



Label: EMI

Catalog numbers:

CP28-5270.71 (on case spine and obi)

T4988 006 61016 3 (barcode)

Country of origin: Japan

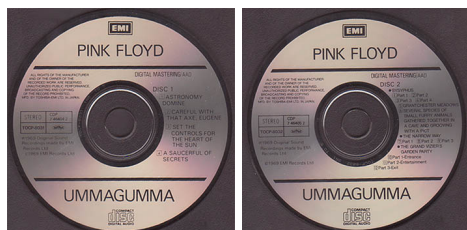
Release date: 1988

Notes: Reissue with the same catalog number but with a new price and slight differences in obi details. Issued in a thick box with a 8 page booklet, an additional 16 page Japanese fold-out insert and an obi.

The price is not listed on the rear cover and on the last page of booklet.



Ummagumma



Label: Toshiba-EMI

Catalog numbers:

TOCP-8031.32 (on case spine and obi)

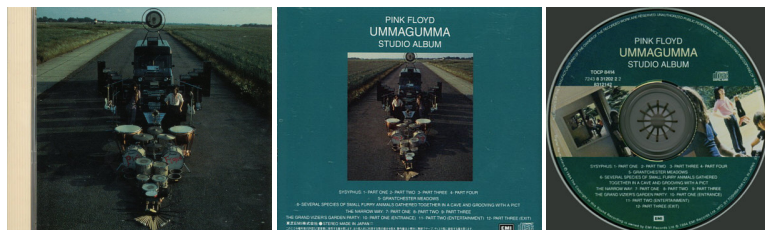
4 988006 690042 (barcode on obi)

Country of origin: Japan

Release date: September 29, 1993



Ummagumma



Label: Toshiba-EMI

Catalog numbers:

TOCP-8413.14 (on case spine and obi)

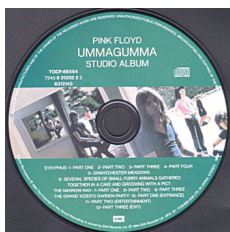
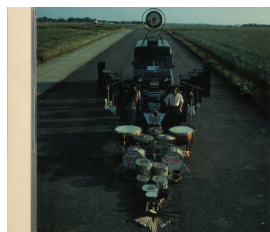
4 988006 701939 (barcode on obi)

Country of origin: Japan

Release date: January 18, 1995

Notes: Disc 1 & 2 issued in separate standard jewel cases with a poster in a green card box with obi. Each case has a colour 16 page booklet, with CD1 also containing an additional paper sheet with Japanese text.

Ummagumma



Label: Toshiba-EMI

Catalog numbers:

TOCP 65553.54 (on obi)

4 988006 783287 (barcode on obi)

TOCP-65553 (on spine of this case)

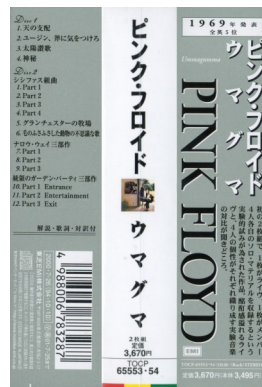
TOCP-65553, 7243 8 31202 2 2, 8312132 (on CD 1)

TOCP-65554, 7243 8 31202 2 2, 8312142 (on CD 2)

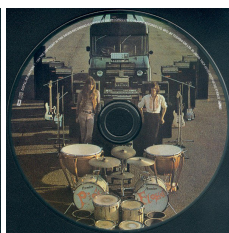
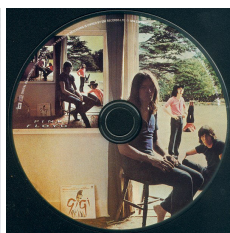
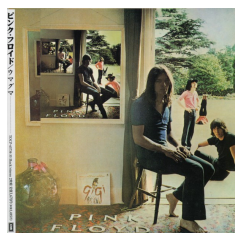
Country of origin: Japan

Release date: July 26, 2000

Notes: Disc 1 & 2 issued in separate standard jewel cases with a poster in a green card box with obi. Each case has a colour 16 page booklet, with CD1 also containing an additional paper sheet with Japanese text.



Ummagumma



Label: Toshiba-EMI

Catalog numbers:

TOCP-65734.35 (on spine and obi)

4 988006 791725 (barcode on obi)

TOCP-65734 (TOCP-65734) (on CD 1)

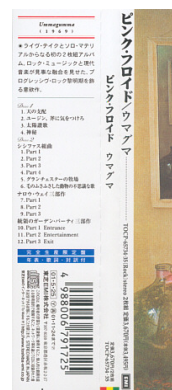
TOCP-65735 (TOCP-65735) (on CD 2)

Country of origin: Japan

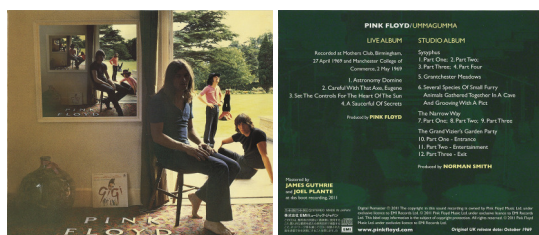
Release date: May 25, 2001

Notes: Issued in a mini LP gatefold sleeve. Issued with an obi, inner sleeve and paper inserts.

For complete content description and further details see also 'Appendix: Cardboard Sleeve LP Replica'.



Ummagumma Discovery Edition



CDP 7 46381 2 and CP32-5274 (on CD)

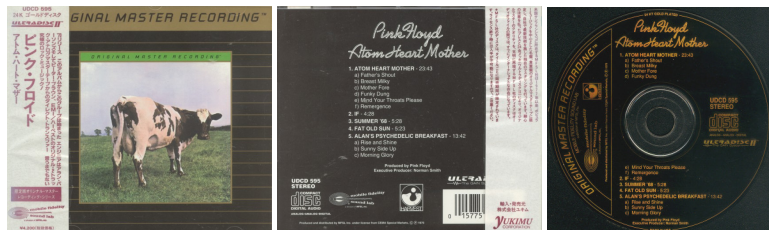
Country of origin: Japan

Release date: 1988

Notes: Reissue with the same catalog number but with a new price and slight differences in obi details. Issued in a standard jewel case with a 4 page booklet, an additional 8 page Japanese fold out and an obi.

The price is not listed on the rear cover and on the last page of booklet - there is a black bar where the price used to be.

Atom Heart Mother



Label: MFSL

Catalog numbers:

UDCD 595 (on obi spine)

UDCD 595 (on case spine)

0 15775 15952 5 (barcode on rear cover)

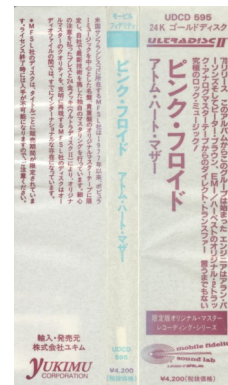
UDCD 595 (on obi and rear cover)

UDCD 595 (on CD)

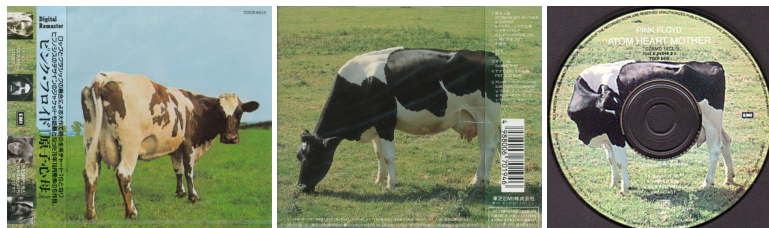
Country of origin: Artwork and CD: USA, obi and additional booklet: Japan

Notes: ULTRADISC II™. Imported by Yukimu Corporation.

Issued in a jewel case with the lift system, with an obi and an additional Japanese booklet. J-card not included. "MADE IN USA" printed at the bottom of the label. "24 KT GOLD PLATED" printed on top of the label.



Atom Heart Mother



Label: Toshiba-EMI

Catalog numbers:

TOCP-8415 (on front cover, case spine and obi)

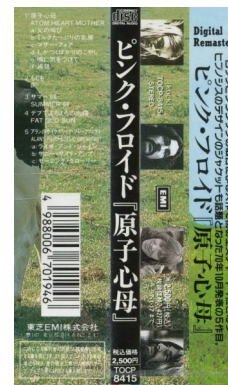
4 988006 701946 (barcode on obi)

CEMD 1072, 7243 8 31246 2 6 and TOCP 8415 (on CD)

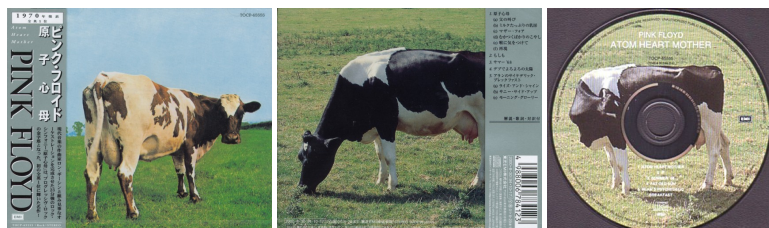
Country of origin: Japan

Release date: 1994

Notes: Issued in a standard jewel case with a booklet, a Japanese paper insert, a double sided fold out "Breakfast Tips" card and an obi.



Atom Heart Mother



Label: Toshiba-EMI

Catalog numbers:

TOCP-65555 (on case spine and obi)

4 988006 784123 (barcode on obi)

TOCP-65555 (7243 8 31246 2 6) (on CD)

Country of origin: Japan

Release date: August 30, 2000

Notes: Issued in a standard jewel case with a 24 page booklet, an additional Japanese sheet and an obi.



This obi has slightly different white writing under the barcode on the rear as the issue below: different Japanese text, the website: www.toshiba-emi.co.jp in line 6.



Left: this issue, right: the issue below.

Atom Heart Mother



Label: EMI

Catalog numbers:

TOCP-65555 (on case spine)

4 988006 784123 (barcode on rear obi)

TOCP-65555 (7243 8 31246 2 6) (on CD)

Country of origin: Japan

Notes: Issued in a standard jewelcase with a 24 page booklet, 2 page fold out card and a Japanese 8 page b/w fold out insert.

White tray. 1994 remaster. "Mfd. by Toshiba-EMI Ltd. in Japan" printed on the CD. "MADE IN JAPAN" printed on rear cover, rear booklet and rear of obi.

This obi has slightly different white writing under the barcode on the rear as the issue above: different Japanese text, the website: www.emimusic.jp in line 2 and the sixth line of text is missing.



Atom Heart Mother



Label: Toshiba-EMI

Catalog numbers:

TOCP-65736 (on spine, obi and CD)

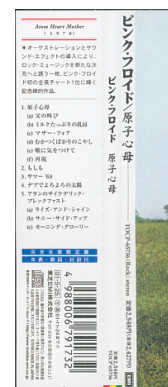
4 988006 791732 (barcode on obi)

Country of origin: Japan

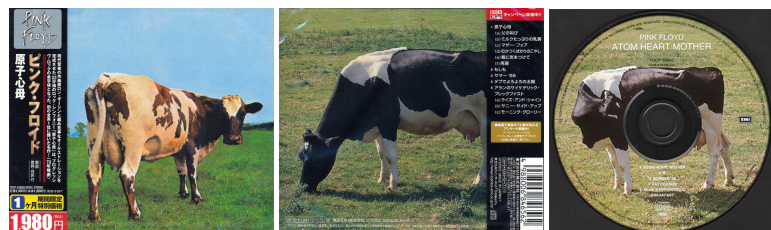
Release date: May 25, 2001

Notes: Issued in a mini LP gatefold sleeve. Issued with an obi, inner sleeve and paper inserts.

For complete content description and further details see also 'Appendix: Cardboard Sleeve LP Replica'.



Atom Heart Mother



Label: EMI

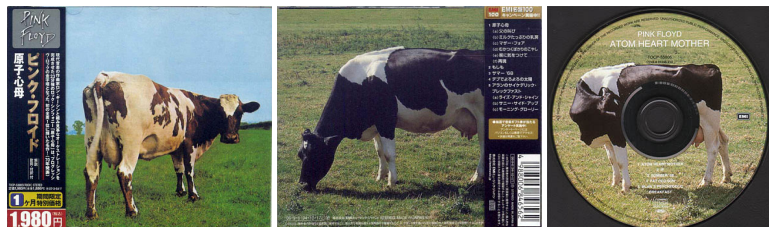
Catalog numbers:

TOCP-53805 (on case spine and obi)

4 988006 846562 (barcode on obi)



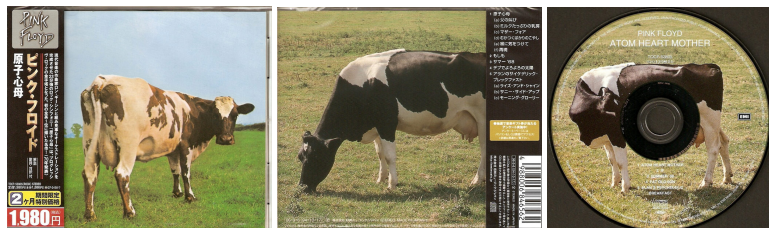
TOCP-53805 (7243 8 31246 2 6) (on CD)

Country of origin: Japan**Release date:** September 6, 2006**Notes:** Remastered reissue under the "Rock UK" series. Issued in a standard case with an obi, 16 page booklet and a Japanese paper insert. The obi has an additional info printed on the rear (shown).**Atom Heart Mother****Label:** EMI**Catalog numbers:**

TOCP-53805 (on case spine and obi)

4 988006 846562 (barcode on obi)

TOCP-53805 (7243 8 31246 2 6) (on CD)

Country of origin: Japan**Release date:** October 3, 2007**Notes:** Remastered 2007 reissue under the "EMI 100" series. Issued in a standard case with an obi, 16 page booklet and a Japanese b/w fold out insert. "EMI 100 ..." on gold rectangle printed on top of rear of obi. The obi has an additional info printed on the rear (shown).**Atom Heart Mother****Label:** EMI**Catalog numbers:**

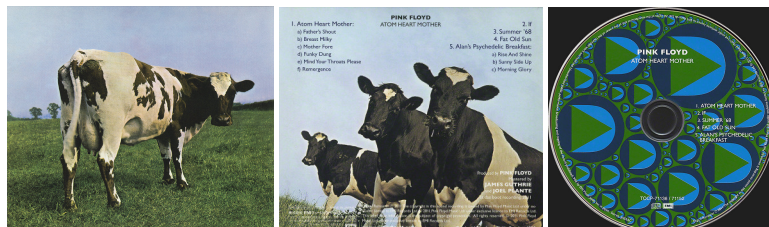
TOCP-53805 (on case spine and obi)

4 988006 846562 (barcode on rear obi)

TOCP-53805 (7243 8 31246 2 6) (on CD)

Country of origin: Japan**Release date:** December 2009**Notes:** 2009 reissue in a standard jewel case with a 24 page booklet, a 2 page fold out card and a Japanese 8 page b/w fold out insert. 1994 remaster. "MFD. BY EMI MUSIC JAPAN INC. IN JAPAN." printed on the CD. "MADE IN JAPAN" printed on rear cover and obi. "...1,980 ... (... 1,886 ...)" printed on obi. Rear of obi printed in black. "2ヶ月 期間限定 特別価格" printed in the yellow rectangle on obi (translated: Limited time special price for 2 months). White tray. Additional Japanese insert without back catalogue.

Re-released in December 2010 with the same artwork and catalogue numbers.

**Atom Heart Mother Discovery Edition****Label:** EMI Music Japan Inc.**Catalog numbers:**

TOCP-71136/71152 (on case spine)

4 988006 887350 (barcode on obi)

TOCP-71136 (on obi)

TOCP-71136/71152 (on CD)

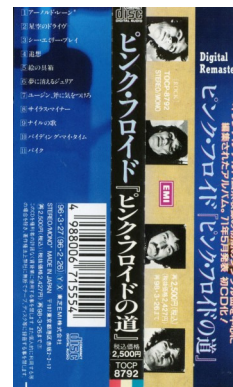
Country of origin: Japan**Release date:** September, 2011

Notes: Issued in a glossy gatefold cardboard sleeve with a 12 page re-designed booklet and Japanese insert. Digitally remastered by James Guthrie and Joel Plante at das boot recording in 2011. Includes CD text (band name, album title, song title, composer). CD in plastic inner sleeve. Obi. It was also sold as a part of the Discovery box.

Relics



Label: Toshiba-EMI
Catalog numbers:
 TOCP-8792 (on case spine and obi)
 4 988006 715554 (barcode on obi)
 TOCP-8792 and 7243 8 35603 2 5 (on CD)
Country of origin: Japan
Notes: Issued in a standard jewel case with a 16 page booklet, an additional Japanese paper insert and an obi.



Relics



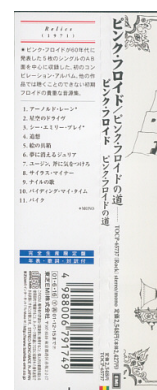
Label: Toshiba-EMI
Catalog numbers:
 TOCP-65556 (on case spine and obi)
 4 988006 784130 (barcode on obi)
 TOCP-65556 (7243 8 35603 2 5) (on CD)
Country of origin: Japan
Notes: Issued in a standard jewel case with a booklet, an additional Japanese paper insert and an obi.



Relics



Label: Toshiba-EMI
Catalog numbers:
 TOCP-65737 (on spine, obi and CD)
 4 988006 791749 (barcode on obi)
Country of origin: Japan
Notes: Issued in a textured card mini LP sleeve. Issued with an obi, inner sleeve and paper inserts. For complete content description and further details see also 'Appendix: Cardboard Sleeve LP Replica'.



Meddle



Label: EMI

Catalog numbers:

CP32-5032 (on case spine and rear cover)

EMS-80322 (on rear cover)

CP32-5032 and SHVL-795(CD) (on CD)

Country of origin: Japan

Release date: September 21, 1985

Notes: Issued in a standard jewel case with a 4 page booklet, an additional 8 page Japanese fold out and an obi. On the rear cover (on the bottom line, to the right of "Made in Japan") is the price (¥3,200). The price is also listed on the last page of booklet.

Meddle



Label: EMI

Catalog numbers:

CP32-5032 (on case spine and rear cover)

EMS-80322 (on rear cover)

CP32-5032 and SHVL-795(CD) (on CD)

Country of origin: Japan

Release date: 1988

Notes: Reissue with the same catalog number but with a new price and slight differences in obi details (obi still without barcode). Issued in a standard jewel case with a 4 page booklet, an additional 8 page Japanese fold out and an obi.

Meddle



Label: EMI

Catalog numbers:

CP32-5032 (on case spine and rear cover)

4 988006 641662 (barcode on obi)

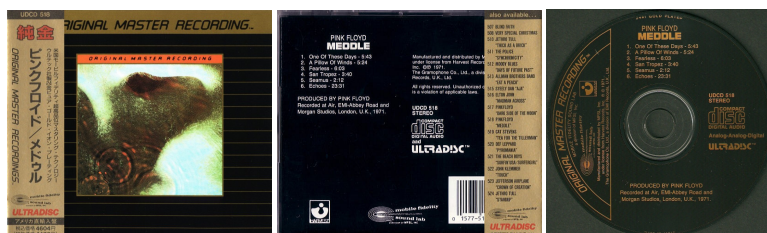
CP32-5032 and SHVL-795(CD) (on CD)

Country of origin: Japan

Release date: 1988

Notes: Reissue with the same catalog number but with a new price and slight differences in obi details (obi with barcode). Issued in a standard jewel case with a 4 page booklet, an additional 8 page Japanese fold out and an obi. The price is not listed on the rear cover and on the last page of booklet.

Meddle



Label: MFSL

Catalog numbers:

UDCD 518 (on obi spine)

UDCD 518 (on case spine)

0 1577- 51518- 6 (barcode on rear cover)

UDCD 518 (on obi and rear cover)

UDCD 518 (on CD)

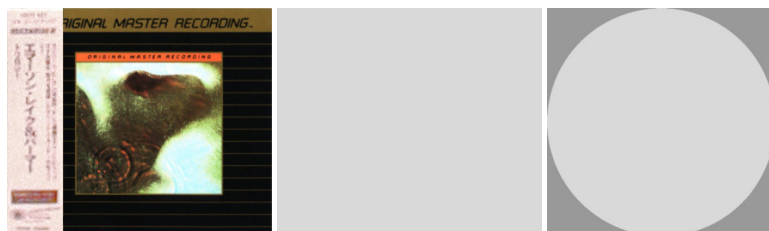
Country of origin: Artwork: USA, CD, obi: Japan

Notes: ULTRADISC™. Imported by Wave Ltd.

Issued in a jewel case with the lift system, with an obi. Additional Japanese booklet not included. "MADE IN JAPAN" printed at the bottom of the label. "24kt GOLD PLATED" printed on top of the CD label.



Meddle



Label: MFSL

Catalog numbers:

UDCD 518

0 1577 51518 2 6 (barcode)

Country of origin: Artwork and CD: USA, obi: Japan

Release date: 1993

Notes: ULTRADISC II™. Imported by Yukimu Corporation. Issued in a jewel case with the lift system, with an obi and an additional Japanese booklet. J-card not included. "MADE IN USA" printed at the bottom of the label. "24 KT GOLD PLATED" printed on top of the label.

Meddle



Label: Toshiba-EMI

Catalog numbers:

TOCP-8254 (on case spine and obi)

4 988006 696136 (barcode on obi)

TOCP-8254 CDP 8297492 (on CD)

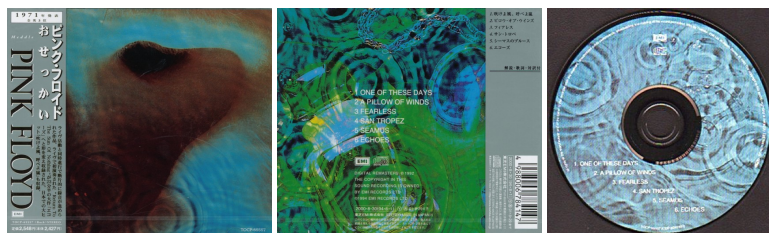
Country of origin: Japan

Release date: 1994

Notes: Issued in a standard jewel case with a 16 page booklet, an additional 4 page Japanese fold out and an obi.



Meddle



Label: Toshiba-EMI

Catalog numbers:

TOCP-65557 (on case spine and obi)

4 988006 784147 (barcode on obi)

TOCP-65557 (CDP 8297492) (on CD)

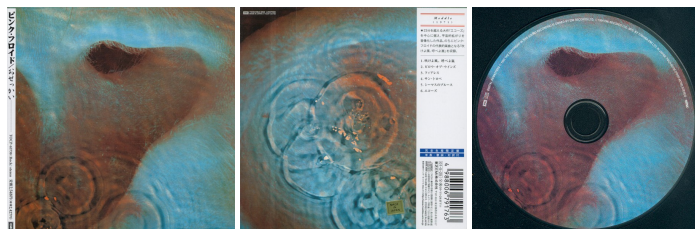
Country of origin: Japan

Release date: August 30, 2000

Notes: Issued in a standard jewel case with a booklet, an additional Japanese paper insert and an obi.



Meddle



Label: Toshiba-EMI

Catalog numbers:

TOCP-65738 (on spine, obi and CD)

4 988006 791763 (barcode on obi)

Country of origin: Japan

Release date: May 25, 2001

Notes: Issued in a mini LP gatefold sleeve. Issued with an obi, inner sleeve and paper inserts.

For complete content description and further details see also 'Appendix: Cardboard Sleeve LP Replica'.



Meddle



Label: EMI

Catalog numbers:

TOCP-53806 (on case spine and obi)

4 988006 846579 (barcode on obi)

TOCP-53806 (CDP 8297492) (on CD)

Country of origin: Japan

Release date: September 6, 2006

Notes: Remastered reissue under the "Rock UK" series. Issued in a standard case with an obi, booklet and a Japanese paper insert. The obi has an additional info printed on the rear (shown).



Meddle



Label: EMI

Catalog numbers:

TOCP-53806 (on case spine and obi)

4 988006 846579 (barcode on obi)

TOCP-53806 (CDP 8297492) (on CD)

Country of origin: Japan

Release date: October 3, 2007.

Notes: Remastered 2007 reissue under the "EMI 100" series. Issued in a standard case with an obi, booklet and a Japanese b/w fold out insert. "EMI 100 ..." on gold rectangle printed on top of rear of obi. The obi has an additional info printed on the rear (shown).

Meddle



Label: EMI

Catalog numbers:

TOCP-53806 (on case spine and obi)

4 988006 846579 (barcode on obi)

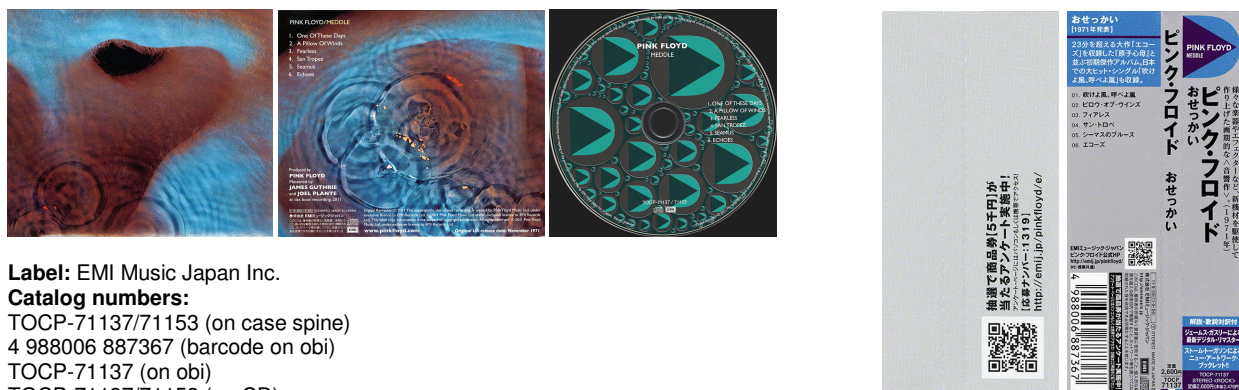
TOCP-53806 (CDP 8297492) (on CD)

Country of origin: Japan

Release date: December 2009

Notes: 2009 reissue in a standard jewel case with a 16 page booklet and a Japanese 8 page b/w fold out insert. 1992 remaster. "Mfd. by EMI Music Japan Inc. in Japan." printed on the CD. "MADE IN JAPAN" printed on rear cover and obi. "...1,980 ... (... 1,886 ...)" printed on obi. Rear of obi printed in black. "2ヶ月 期間限定 特別価格" printed in the yellow rectangle on obi (translated: Limited time special price for 2 months). White tray. Additional Japanese insert without back catalogue. Re-released in December 2010 with the same artwork and catalogue numbers.

Meddle Discovery Edition



Label: EMI Music Japan Inc.

Catalog numbers:

TOCP-71137/71153 (on case spine)

4 988006 887367 (barcode on obi)

TOCP-71137 (on obi)

TOCP-71137/71153 (on CD)

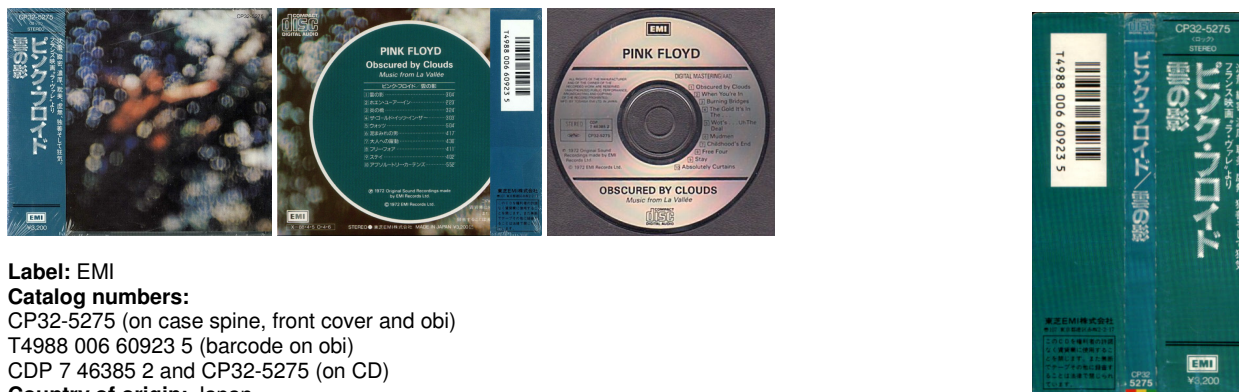
Country of origin: Japan

Release date: September, 2011

Notes: Issued in a glossy gatefold cardboard sleeve with a 12 page re-designed booklet and Japanese insert. Digitally remastered by James Guthrie and Joel Plante at das boot recording in 2011. Includes CD text (band name, album title, song title, composer). CD in plastic inner sleeve. Obi.

It was also sold as a part of the Discovery box.

Obscured by Clouds



Label: EMI

Catalog numbers:

CP32-5275 (on case spine, front cover and obi)

T4988 006 60923 5 (barcode on obi)

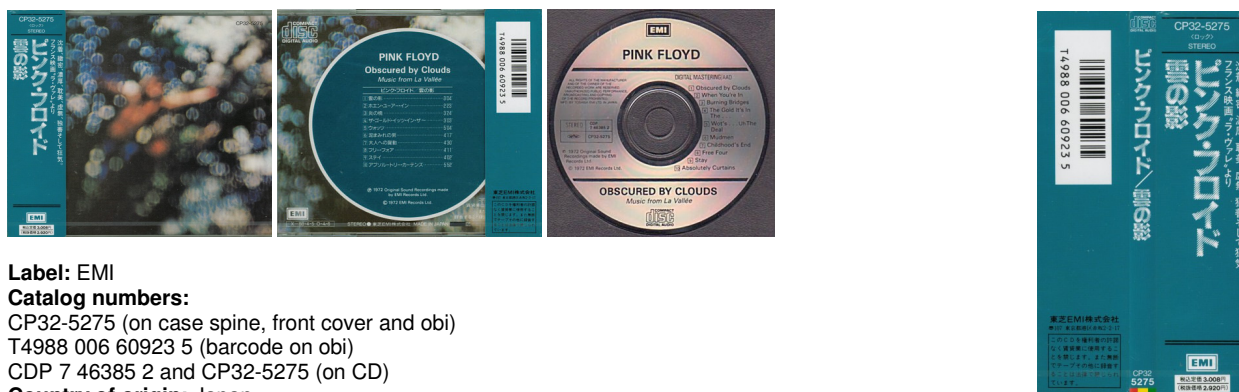
CDP 7 46385 2 and CP32-5275 (on CD)

Country of origin: Japan

Release date: April 6, 1987

Notes: Issued in a standard jewel case with a 4 page booklet, an additional 8 page Japanese fold out and an obi. On the rear cover (on the bottom line, to the right of "Made in Japan") is the price (¥3,200). The price is also listed on the last page of booklet.

Obscured by Clouds



Label: EMI

Catalog numbers:

CP32-5275 (on case spine, front cover and obi)

T4988 006 60923 5 (barcode on obi)

CDP 7 46385 2 and CP32-5275 (on CD)

Country of origin: Japan

Release date: 1988

Notes: Reissue with the same catalog number but with a new price and slight differences in obi details. Issued in a standard jewel case with a 4 page booklet, an additional 8 page Japanese fold out and an obi.

The price is not listed on the rear cover and on the last page of booklet - there is a black bar where the price used to be.

Obscured by Clouds



Label: Toshiba-EMI

Catalog numbers:

TOCP-8793 (on case spine and obi)

4 988006 715561 (barcode on obi)

Country of origin: Japan

Release date: March 27, 1996

Notes: Issued in a standard jewel case with a 24 page booklet, an additional Japanese paper insert and an obi.

Obscured by Clouds



Label: Toshiba-EMI
Catalog numbers:
 TOCP-65558 (on case spine and obi)
 4 988006 784154 (barcode on obi)
Country of origin: Japan
Release date: August 30, 2000

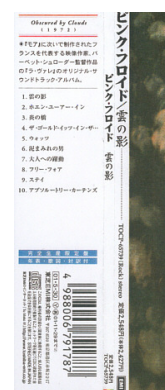


Obscured by Clouds



Label: Toshiba-EMI
Catalog numbers:
 TOCP-65739 (on spine, obi and CD)
 4 988006 791787 (barcode on obi)
Country of origin: Japan
Release date: May 30, 2001

Notes: Issued in a textured mini LP sleeve with rounded corners. Issued with an obi, inner sleeve and paper inserts.
 For complete content description and further details see also 'Appendix: Cardboard Sleeve LP Replica'.



Obscured by Clouds



Label: EMI
Catalog numbers:
 TOCP-53977 (on case spine and obi)
 4 988006 859258 (barcode on obi)
 TOCP-53977 (7243 8 35609 2 9) (on CD)
Country of origin: Japan
Release date: October 31, 2007

Notes: 2007 reissue. Issued in a standard case with an obi, 24 page booklet and a Japanese 8 page b/w fold out insert. The obi has an additional info printed on the rear (shown). White tray.



Obscured by Clouds



Label: EMI

Catalog numbers:

TOCP-53977 (on case spine and obi)

4 988006 859258 (barcode on obi)

TOCP-53977 (7243 8 35609 2 9) (on CD)

Country of origin: Japan

Release date: December 2009

Notes: 2009 reissue in a standard jewelcase with a 24 page booklet and a Japanese 8 page b/w fold out insert. 1995 remaster.

"Mfd. by EMI Music Japan Inc. in Japan." printed on the CD. "MADE IN JAPAN" printed on rear cover and obi. "...1,980 ... (... 1,886

...)" printed on obi. Rear of obi printed in black. "2ヶ月 期間限定 特別価格" printed in the yellow rectangle on obi (translated:

Limited time special price for 2 months). White tray. Additional Japanese insert without back catalogue.

Re-released in December 2010 with the same artwork and catalogue numbers.

Obscured by Clouds Discovery Edition



Label: EMI Music Japan Inc.

Catalog numbers:

TOCP-71138/71154 (on case spine)

4 988006 887374 (barcode on obi)

TOCP-71138 (on obi)

TOCP-71138/71154 (on CD)

Country of origin: Japan

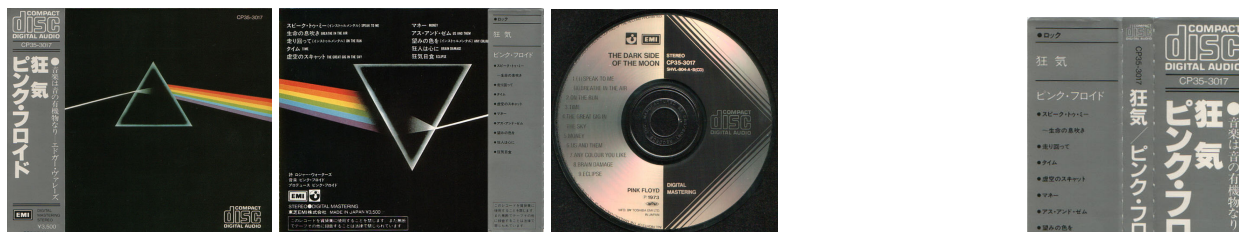
Release date: September, 2011

Notes: Issued in a glossy gatefold cardboard sleeve with an 8 page re-designed booklet and Japanese insert. Digitally remastered by James Guthrie and Joel Plante at das boot recording in 2011. Includes CD text (band name, album title, song title, composer).

CD in plastic inner sleeve. Obi.

It was also sold as a part of the Discovery box.

The Dark Side of the Moon



Label: EMI

Catalog numbers:

CP35-3017 (on case spine and obi)

Country of origin: Japan

Release date: May 1983 (through 1986)

Notes: Issued in a standard jewel case with a 24 page Japanese booklet and an obi. On the rear cover (on the bottom line, to the right of "Made in Japan") is the price (Y3,500). The price is also listed on the last page of booklet.

The Dark Side of the Moon



Label: EMI

Catalog numbers:

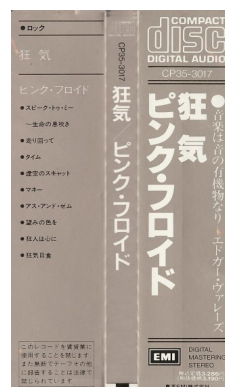
CP35-3017 (on case spine and obi)

Country of origin: Japan

Release date: 1986

Notes: Reissue with the same catalog number but with a new price and slight differences in obi details.

Issued in a standard jewel case with a 24 page Japanese booklet and an obi. On the rear cover is the price not listed. No barcode on obi.



The Dark Side of the Moon



Label: EMI

Catalog numbers:

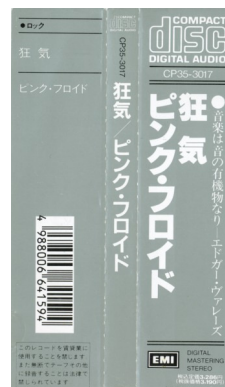
CP35-3017 (on case spine and obi)

4 988006 641594 (barcode on obi)

Country of origin: Japan

Release date: 1986

Notes: Reissue with the same catalog number but with a new price and slight differences in obi details. Issued in a standard jewel case with a 24 page Japanese booklet and an obi. On the rear cover is the price not listed. Barcode on obi.



The Dark Side of the Moon



Label: MFSL

Catalog numbers:

UDCD 517 (on obi spine)

UDCD 517 (on case spine)

0 1577-51517-2 7 (barcode on rear cover)

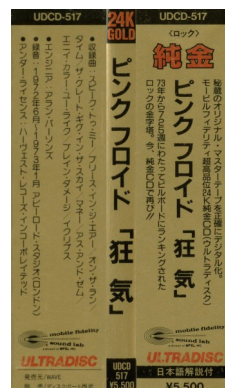
UDCD 517 (on obi and rear cover)

UDCD 517 (on CD)

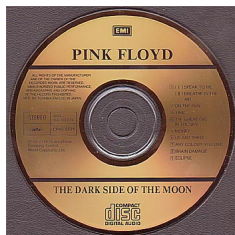
Country of origin: Artwork: USA, CD, obi and additional booklet: Japan

Notes: ULTRADISC™. Imported by Wave Ltd.

Issued in a jewel case with the lift system, with an obi and a 8 page additional Japanese fold out booklet. "MADE IN JAPAN" printed at the bottom of the label. "24kt GOLD PLATED" printed on top of the label.



The Dark Side of the Moon



Label: EMI

Catalog numbers:

CP43-5771 (on case spine and front cover and obi)

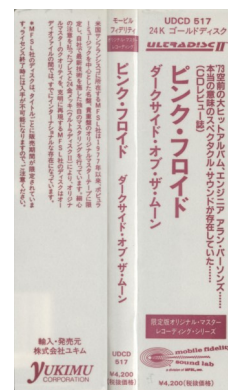
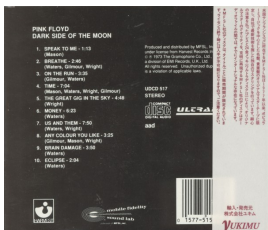
CP43-5771 and SHVL-804-AB(CD) (on CD)

Country of origin: Japan

Release date: December 21, 1988

Notes: A 24K Gold CD issued in a standard jewel case. Issued under the Eternity Gold label. The 24 page booklet features both English and Japanese text, a brief history of the band and some black and white photos not seen on standard issues.

The Dark Side of the Moon



Label: MFSL

Catalog numbers:

UDCD 517 (on obi spine)

UDCD 517 (on case spine)

0 1577 51517 2 7 (barcode on rear cover)

UDCD 517 (on obi and rear cover)

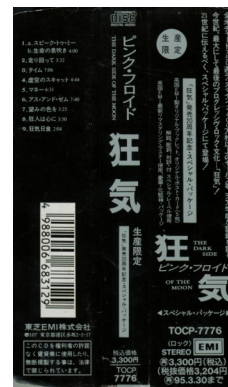
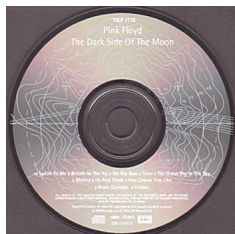
UDCD 517 (on CD)

Country of origin: Artwork and CD: USA, obi and additional booklet: Japan

Notes: ULTRADISC II™. Imported by Yukimu Corporation.

Issued in a jewel case with the lift system, with an obi and an additional Japanese booklet. J-card not included. "MADE IN USA" printed at the bottom of the label. "24 KT GOLD PLATED" printed on top of the label.

The Dark Side of the Moon



Label: Toshiba-EMI

Catalog numbers:

TOCP 7776 (on case spine)

TOCP-7776 (on front cover)

TOCP-7776 and (CDP 7 81479 2) (on CD)

Country of origin: Japan

Release date: March 31, 1993

Notes: Remastered 20th anniversary issue. Issued in a special Cardboard Box with a 28 page booklet, five art cards and a 4 page Japanese paper insert.

The Dark Side of the Moon



Label: Toshiba-EMI

Catalog numbers:

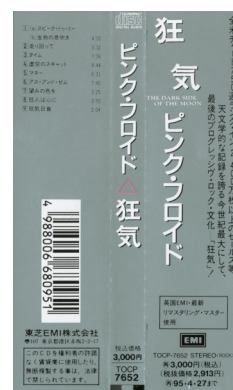
TOCP-7652 (on case spine and obi)

4 988006 680951 (barcode on obi)

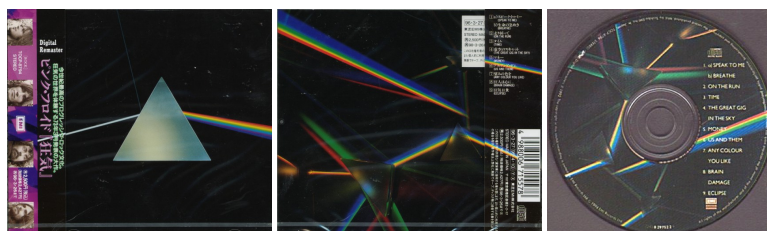
Country of origin: Japan

Release date: April 28, 1993

Notes: Issued in a standard jewel case with a 24 page Japanese booklet and an obi.



The Dark Side of the Moon



Label: Toshiba-EMI

Catalog numbers:

TOCP-8794 (on case spine and obi)

4 988006 715578 (barcode on obi)

TOCP-8794 and 7243 8 29752 2 9 (on CD)

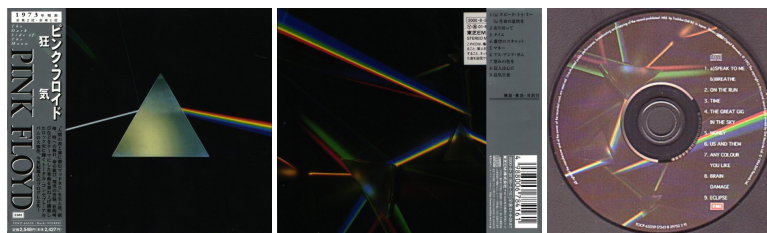
Country of origin: Japan

Release date: March 27, 1996

Notes: Issued in a standard jewel case with a 24 page booklet, Japanese paper insert and obi.



The Dark Side of the Moon



Label: Toshiba-EMI

Catalog numbers:

TOCP-65559 (on case spine and obi)

4 988006 784161 (barcode on obi)

TOCP-65559 (7243 8 29752 2 9) (on CD)

Country of origin: Japan

Release date: August 30, 2000

Notes: Issued in a standard jewel case with a 24 page booklet, an additional 4 page Japanese fold out and an obi.



The Dark Side of the Moon



Label: Toshiba-EMI

Catalog numbers:

TOCP-65740 (on spine, obi and CD)

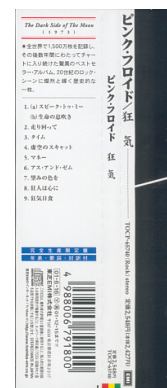
4 988006 791800 (barcode on obi)

Country of origin: Japan

Release date: June 16, 2001

Notes: Issued in a mini LP gatefold sleeve with an obi. Also includes: inner sleeve and paper inserts, mini posters and stickers, copies of record labels.

For complete content description and further details see also 'Appendix: Cardboard Sleeve LP Replica'.



The Dark Side of the Moon SACD



Label: Toshiba-EMI

Catalog numbers:

TOGP-15001 (on case spine)

TOGP 15001 (on obi)

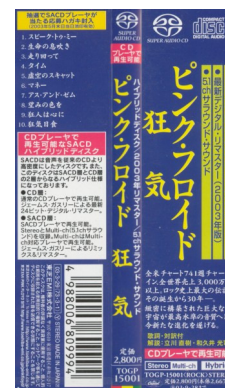
9 88006 809994 (barcode on obi)

TOGP-15001 & (7243 5 82136 2 1) (on SACD)

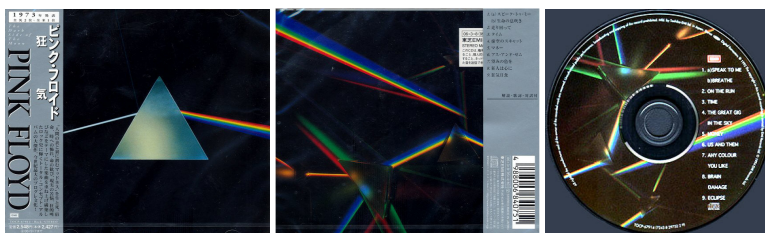
Country of origin: Japan

Release date: March 29, 2003

Notes: Hybrid SACD. Issued in a standard jewel case with a 20 page booklet, an additional 4 page Japanese fold out and an obi.



The Dark Side of the Moon



Label: Toshiba-EMI

Catalog numbers:

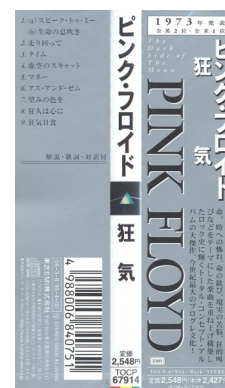
TOCP-67914 (on spine, obi and CD)

4 988006 840751 (barcode on obi)

Country of origin: Japan

Release date: March 8, 2006

Notes: Issued in a standard jewel case with a 24 page booklet, an additional 4 page Japanese fold out and an obi.



The Dark Side of the Moon



Label: EMI

Catalog numbers:

TOCP-53807 (on case spine and obi)

4 988006 846586 (barcode on obi)

TOCP-53807 (7243 8 29752 2 9) (on CD)

Country of origin: Japan

Release date: September 6, 2006

Notes: Remastered reissue under the "Rock UK" series. Issued in a standard case with an obi, 24 page booklet and a 4 page Japanese paper insert. The obi has an additional info printed on the rear (shown).

The Dark Side of the Moon



Label: EMI

Catalog numbers:

TOCP-53807 (on case spine and obi)

4 988006 846586 (barcode on obi)

TOCP-53807 (7243 8 29752 2 9) (on CD)

Country of origin: Japan

Release date: October 3, 2007

Notes: Remastered 2007 reissue under the "EMI 100" series. Issued in a standard case with an obi, 24 page booklet and a 8 page Japanese b/w fold out insert. "EMI 100 ..." on gold rectangle printed on top of rear of obi. The obi has an additional info printed on the rear (shown). Additional Japanese insert without "The Piper At The Gates Of Dawn" on back catalogue. Red sticker on front. "One CD can be gotten by these three stickers" printed in Japanese on sticker. White tray.

The Dark Side of the Moon



Label: EMI

Catalog numbers:

TOCP-53807 (on case spine and obi)

4 988006 846586 (barcode on obi)

TOCP-53807 (7243 8 29752 2 9) (on CD)

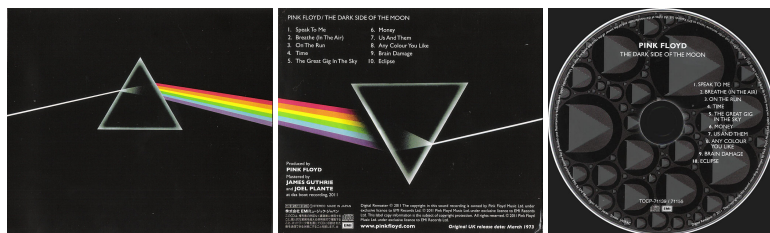
Country of origin: Japan

Release date: December 2009

Notes: 2009 reissue in a standard jewelcase with a 24 page booklet and a Japanese 8 page b/w fold out insert. 1992 remaster. "Mfd. by EMI Music Japan Inc. in Japan." printed on the CD. "MADE IN JAPAN" printed on rear cover, rear booklet and rear obi. "...1,980 ... (... 1,886 ...)" printed on obi. Rear of obi printed in black. "2ヶ月 期間限定 特別価格" printed in the yellow rectangle on obi (translated: Limited time special price for 2 months). White tray. Additional Japanese insert without back catalogue.

Re-released in December 2010 with the same artwork and catalogue numbers.

The Dark Side of the Moon Discovery Edition



Label: EMI Music Japan Inc.

Catalog numbers:

TOCP-71139/71155 (on case spine)

4 988006 887381 (barcode on obi)

TOCP-71139 (on obi)

TOCP-71139/71155 (on CD)

Country of origin: Japan

Release date: September, 2011

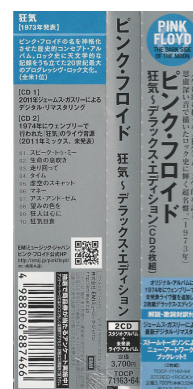
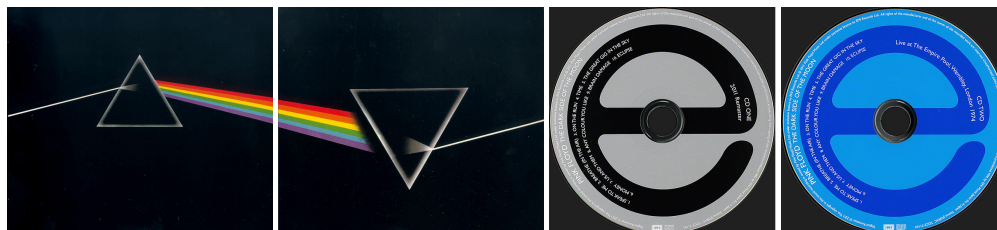
Notes: Issued in a glossy gatefold cardboard sleeve with a 12 page re-designed booklet and Japanese insert. Digitally remastered by James Guthrie and Joel Plante at das boot recording in 2011. Includes CD text (band name, album title, song title, composer). CD in plastic inner sleeve. Obi.

It was also sold as a part of the Discovery box.

The Dark Side of the Moon Experience Edition



Slipcase



Label: EMI Music Japan

Catalog numbers:

TOCP-71163~64 (on spine)

4 988006 887466 (barcode on obi)

TOCP-71163 (on CD 1)

TOCP-71164 (on CD 2)

Country of origin: Japan

Release date: September, 2011

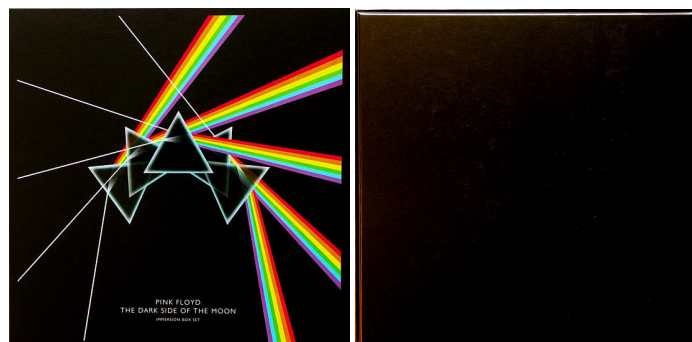
Notes: Issued in a glossy gatefold cardboard sleeve and slipcase with a 16 page re-designed booklet and a 12 page Japanese insert. CDs in plastic inner sleeve. Digitally remastered by James Guthrie and Joel Plante at das boot recording in 2011.

Disc one is the studio album remastered. Disc two features Dark Side of the Moon performed live at the Empire Pool, Wembley, London, England, November 15-16, 1974. Includes CD text.

The Dark Side of the Moon Immersion Box Set



Sealed



Open



Label: EMI

Catalog numbers:

TOCP-71165~67 (on obi sticker)

4 988006 887473 (barcode on rear of Japanese booklet)

50999 029432 2 0 and LC0542 50999 029431 2 1 (on Disc 1) (CD 1)

50999 029433 2 9 and LC0542 50999 029431 2 1 (on Disc 2) (CD 2)

50999 029431 9 0 and LC0542 50999 029431 2 1 (on Disc 3) (DVD 1)

50999 029433 9 8 and LC0542 50999 029431 2 1 (on Disc 4) (DVD 2)

50999 029434 9 7 and LC0542 50999 029431 2 1 (on Disc 5) (Blu-ray 1)

50999 029434 2 8 and LC0542 50999 029431 2 1 (on Disc 6) (CD 3)

50999 029434 9 7 and 50999 029431 2 1 (on rearcover of Disc 5)

50999 029434 2 8 and 50999 029431 2 1 (on rearcover of Disc 6)

Country of origin: Box: EU, Discs: EU, Additional booklet: Japan, Obi sticker: Japan

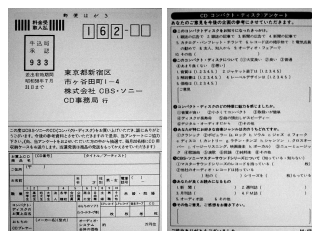
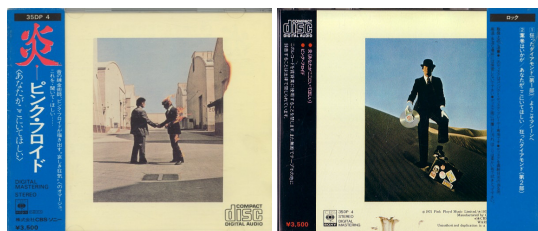
Release date: September, 2011

Notes: This is the EU edition, with an additional four-page booklet the back of which serves as an alternate back cover, plus a poly bag that covers the set and has a silver Japanese sticker on it.

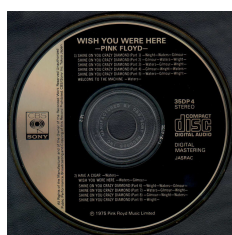
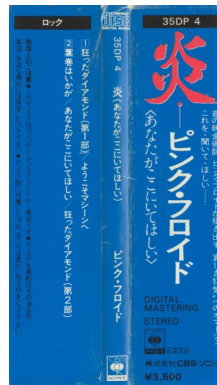
6 disc special edition. Issued in a 29x29 cm card box with a 36 page 27x27cm booklet, 22 page 27x27 cm photo book, exclusive Storm Thorgerson art print, 5 collectors' cards, replica of the tour ticket and backstage pass, scarf, 3 black marbles, 9 coasters and a 12 page credits booklet.

This issue includes 3 CDs, 2 DVDs and 1 Blu-ray. Four discs are housed on the bottom of the box. Discs 5 and 6 are housed in separates cardboard sleeves.

Wish You Were Here



Replay card



Label: CBS/Sony

Catalog numbers:

35DP 4 (on case spine and obi)

Country of origin: Japan

Release date: October 1982

Notes: Issued in a standard jewel case with a 12 page Japanese booklet with English and Japanese text. Boxed obi. The CDs were made up of two tracks, which happen to be side one and side two of the LP. The songs were indexed, but unfortunately not every CD-player can read the index from the CD and selecting specific songs is impossible.



Inside of the booklet from Japanese Wish You Were Here (35DP 4) with index mark notification.

Wish You Were Here



Label: CBS/Sony

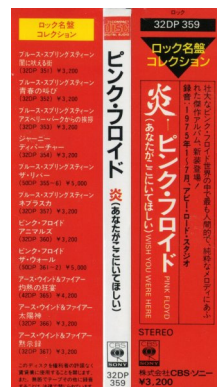
Catalog numbers:

32DP 359 (on case spine and obi)

Country of origin: Japan

Release date: July 21, 1985

Notes: Issued in a standard jewel case with a 12 page Japanese booklet and a boxed obi.



Wish You Were Here



Label: CBS/Sony

Catalog numbers:

28DP 5005 (on case spine, CD, cover and obi)

4 988009 600451 (barcode on rear cover)

Country of origin: Japan

Release date: February 26, 1988

Notes: Issued in a standard jewel case with a 16 page Japanese booklet and an obi.



Wish You Were Here



Label: CBS/Sony

Catalog numbers:

28DP 5005 (on case spine, CD, cover and obi)

4 988009 600451 (barcode on rear cover)

Country of origin: Japan

Notes: Reissue with the same catalog number but with a new price and slight differences in obi details.

Issued in a standard jewel case with a 16 page Japanese booklet and an obi.



Wish You Were Here



Label: CBS/Sony

Catalog numbers:

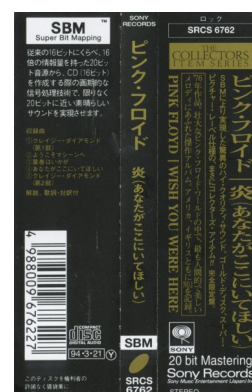
SRCS 6762 (on case spine and obi)

4 988009 676227 (barcode on obi)

Country of origin: Japan

Release date: March 21, 1994

Notes: 24-karat gold CD issued in transparent jewel case with a 12 page Japanese booklet and an obi but without rear cover. A 20-Bit digital transfer (SBM) from the original master tape.



Wish You Were Here



Label: CBS/Sony
Catalog numbers:
 SRCS 8483 (on case spine, obi and CD)
 4 988009 848396 (barcode on obi)
Country of origin: Japan
Release date: September 19, 1998
Notes: Issued in a standard jewel case with a booklet, an additional Japanese paper insert and an obi.

Wish You Were Here



Label: Toshiba-EMI
Catalog numbers:
 TOCP-65560 (on case spine and obi)
 4 988006 782716 (barcode on obi)
 TOCP-65560 (7243 8 29750 2 1) (on CD)
Country of origin: Japan
Release date: June 28, 2000
Notes: Issued in a standard jewel case with white tray and a 4 page fold out plastic sleeve, 16 page booklet, an additional Japanese paper insert and an obi. This Obi has slightly different white writing under the barcode on the rear as the issue below:
 different Japanese letters and numbers in line 2 and a sixth line with Japanese letters and English words "To Make It" and the website: <http://www.toshiba-emi.co.jp>



Left: this issue, right: the issue below.

Wish You Were Here



Label: Toshiba-EMI
Catalog numbers:
 TOCP-65560 (on case spine and obi)
 4 988006 782716 (barcode on obi)
 TOCP-65560 (7243 8 29750 2 1) (on CD)
Country of origin: Japan
Notes: Issued in a standard jewel case with white tray and a 4 page fold out plastic sleeve, 16 page booklet, an additional Japanese paper insert and an obi. This Obi has slightly different Japanese letters and the website: www.emimusic.jp in line 2 and without a sixth line.

Wish You Were Here



Label: Toshiba-EMI

Catalog numbers:

TOCP-65549 (on obi sticker)

4 988006 785076 (barcode on sticker)

TOCP-65549 (on CD)

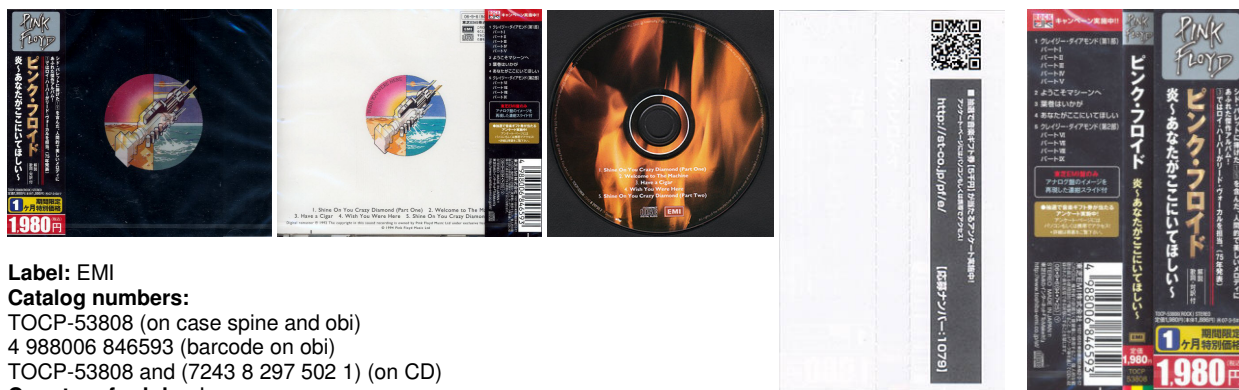
Country of origin: Japan

Release date: September 13, 2000

Notes: Issued in a mini LP sleeve in a black resealable bag with a sticker on the rear as an obi. Includes: inner sleeve and paper inserts, mini poster and a post card.

For complete content description and further details see also 'Appendix: Cardboard Sleeve LP Replica'.

Wish You Were Here



Label: EMI

Catalog numbers:

TOCP-53808 (on case spine and obi)

4 988006 846593 (barcode on obi)

TOCP-53808 and (7243 8 297 502 1) (on CD)

Country of origin: Japan

Release date: September 6, 2006

Notes: Remastered reissue under the "Rock UK" series. Issued in a standard case with an obi, booklet and a Japanese paper insert, also has a plastic wrap with "Handshake" logo wrapped around booklet (shown). The obi has an additional info printed on the rear (shown).

Wish You Were Here



Label: EMI

Catalog numbers:

TOCP-53808 (on case spine and obi)

4 988006 846593 (barcode on obi)

TOCP-53808 and (7243 8 297 502 1) (on CD)

Country of origin: Japan

Release date: October 3, 2007.

Notes: Remastered 2007 reissue under the "EMI 100" series. Issued in a standard case with an obi, booklet, Japanese b/w fold out insert and plastic wrap with "Handshake" logo wrapped around booklet. "EMI 100 ..." on gold rectangle printed on top of rear of obi. The obi has an additional info printed on the rear (shown).

Wish You Were Here



Label: EMI

Catalog numbers:

TOCP-53808 (on case spine and obi)

4 988006 846593 (barcode on obi)

TOCP-53808 (7243 8 29750 2 1) (on CD)

Country of origin: Japan

Release date: December 2009

Notes: 2009 reissue in a standard jewel case with a 16 page booklet, a Japanese 16 page b/w fold out insert and a 4 page fold out plastic sleeve. 1992 remaster. "Mfd. by EMI Music Japan Inc. in Japan." printed on the CD. "MADE IN JAPAN" printed on rear cover and obi. "...1,980 ... (... 1,886 ...)" printed on obi. Rear of obi printed in black. "2ヶ月 期間限定 特別価格" printed in the yellow rectangle on obi (translated: Limited time special price for 2 months). White tray. Additional Japanese insert without back catalogue.

Re-released in December 2010 with the same artwork and catalogue numbers.

Wish You Were Here Discovery Edition



Label: EMI Music Japan Inc.

Catalog numbers:

TOCP-71140/71156 (on case spine)

4 988006 887398 (barcode on obi)

TOCP-71140 (on obi)

TOCP-71140/71156 (on CD)

Country of origin: Japan

Release date: September, 2011

Notes: Issued in a glossy gatefold cardboard sleeve with a 12 page re-designed booklet and Japanese insert. Digitally remastered by James Guthrie and Joel Plante at das boot recording in 2011. Includes CD text (band name, album title, song title, composer). CD in plastic inner sleeve. Obi.

It was also sold as a part of the Discovery box.

Wish You Were Here Experience Edition



Slipcase



Label: EMI Music Japan

Catalog numbers:

TOCP 71169~70 (on spine)

4 988006 889651 (barcode on obi)

? (on CD 1)

? (on CD 2)

Country of origin: Japan

Release date: November, 9th 2011

Notes: Issued in a glossy gatefold cardboard sleeve and slipcase with a 16 page re-designed booklet and Japanese insert. CDs in plastic inner sleeve. Digitally remastered by James Guthrie and Joel Plante at das boot recording in 2011. Disc one is the studio album remastered. Disc two features bonus tracks. Includes CD text.

Wish You Were Here Immersion Box Set



Sealed



Open



Label: EMI

Catalog numbers:

TOCP-71171~72 (on obi sticker)

4 988006 889663 (barcode on rear of Japanese booklet)

50999 029436 2 6 and LC0542 50999 029435 2 7 (on Disc 1) (CD 1)

50999 029437 2 5 and LC0542 50999 029435 2 7 (on Disc 2) (CD 2)

50999 029435 9 6 and LC0542 50999 029435 2 7 (on Disc 3) (DVD 1)

50999 029437 9 4 and LC0542 50999 029435 2 7 (on Disc 4) (DVD 2)

50999 029438 9 3 and LC0542 50999 029435 2 7 (on Disc 5) (Blu-ray 1)

50999 029438 9 3 and 50999 029435 2 7 (on rearcover of Disc 5)

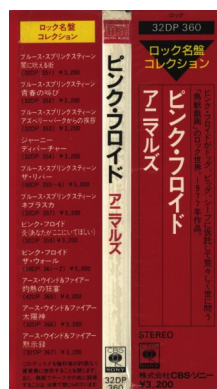
Country of origin: Artwork: EU, Discs: EU, Additional booklet: Japan, Obi sticker: Japan**Release date:** November, 9th 2011**Notes:** This is the EU edition, with an additional four-page booklet the back of which serves as an alternate back cover, plus a poly bag that covers the set and has a silver Japanese sticker on it.

5 disc special edition. Issued in a 29x29 cm card box with a 36 page 27x27cm booklet, 20 page 27x27 cm photo book, exclusive Storm Thorgerson art print, 4 collectors' cards, replica of the tour ticket and backstage pass, scarf, 3 clear marbles, 9 coasters and a 12 page credits booklet.

This issue includes 2 CDs, 2 DVDs and 1 Blu-ray. Four discs are housed on the bottom of the box. Discs 5 housed in a separate cardboard sleeve.

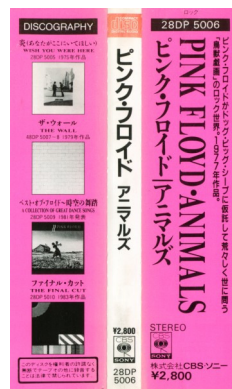
Animals**Label:** CBS/Sony**Catalog numbers:**

32DP 360 (on case spine and obi)

Country of origin: Japan**Release date:** July 21, 1985**Notes:** Issued in a standard jewel case with a 20 page Japanese booklet and a boxed obi.**Animals****Label:** CBS/Sony**Catalog numbers:**

28DP 5006 (on case spine and obi)

4 988009 600550 (barcode)

Country of origin: Japan**Release date:** February 26, 1988**Notes:** Issued in a standard jewel case with a booklet, an additional Japanese paper insert and an obi.**Animals****Label:** CBS/Sony**Catalog numbers:**

28DP 5006 (on case spine and obi)

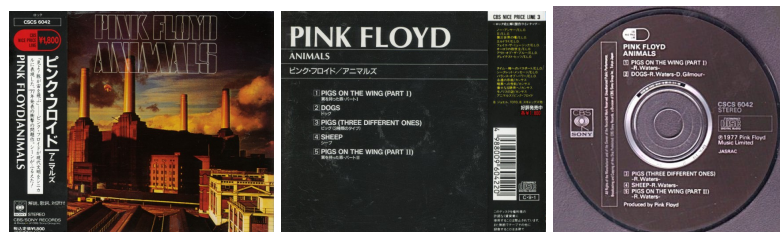


4 988009 600550 (barcode)

Country of origin: Japan

Notes: Reissue with the same catalog number but with a new price and slight differences in obi details. Issued in a standard jewel case with a booklet, an additional Japanese paper insert and an obi.

Animals



Label: CBS/Sony

Catalog numbers:

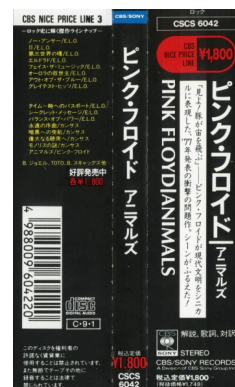
CSCS 6042 (on case spine, obi, rear cover and CD)

4 988009 604220 (barcode on obi and rear cover)

Country of origin: Japan

Release date: September 1, 1990

Notes: Issued in a standard jewel case with a fold out slick, an additional Japanese paper insert and an obi.



Animals



Label: CBS/Sony

Catalog numbers:

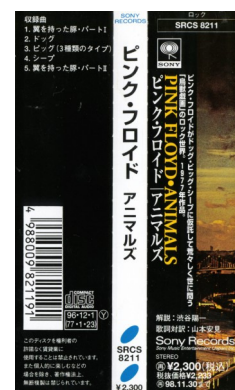
SRCS 8211 (on case spine and obi)

4 988009 821191 (barcode on obi)

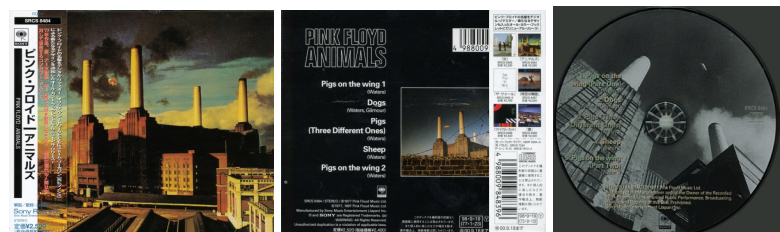
Country of origin: Japan

Release date: December 1, 1996

Notes: Issued in a standard jewel case with a Japanese booklet and an obi.



Animals



Label: CBS/Sony

Catalog numbers:

SRCS 8484 (on case spine and obi)

4 988009 848495 (barcode on obi)

Country of origin: Japan

Release date: September 19, 1998

Notes: Issued in a standard jewel case with a booklet, an additional Japanese paper insert and an obi.



Animals



Label: Toshiba-EMI

Catalog numbers:

TOCP-65561 (on case spine and obi)

4 988006 782723 (barcode on obi)

TOCP-65561 (7243 8 29748 2 6) (on CD)

Country of origin: Japan

Release date: June 28, 2000

Notes: Issued in a standard jewel case with a booklet, an additional Japanese paper insert and an obi.



Animals



Label: Toshiba-EMI

Catalog numbers:

TOCP-65741 (on spine, obi and CD)

4 988006 791817 (barcode on obi)

Country of origin: Japan

Release date: June 16, 2001

Notes: Issued in a mini LP gatefold sleeve. Issued with an obi, inner sleeve, paper inserts and copies of record labels. For complete content description and further details see also 'Appendix: Cardboard Sleeve LP Replica'.



Animals



Label: EMI

Catalog numbers:

TOCP-53809 (on case spine and obi)

4 988006 846609 (barcode on obi)

? (on CD)

Country of origin: Japan

Release date: September 6, 2006

Notes: Remastered reissue under the "Rock UK" series. Issued in a standard case with an obi, booklet and a Japanese paper insert. The obi has an additional info printed on the rear (shown).



Animals



Label: EMI

Catalog numbers:

TOCP-53809 (on case spine and obi)

4 988006 846609 (barcode on obi)

? (on CD)

Country of origin: Japan

Release date: October 3, 2007.

Notes: Remastered 2007 reissue under the "EMI 100" series. Issued in a standard case with an obi, booklet and a Japanese b/w fold out insert. "EMI 100 ..." on gold rectangle printed on top of rear of obi. The obi has an additional info printed on the rear (shown).

Animals



Label: EMI

Catalog numbers:

TOCP-53809 (on case spine and obi)

4 988006 846609 (barcode on rear obi)

TOCP-53809 (7243 8 29748 2 6) (on CD)

Country of origin: Japan

Release date: December 2009

Notes: 2009 reissue in a standard jewel case with a 20 page booklet and a Japanese 12 page b/w fold out insert. 1992 remaster. "MFD. BY EMI MUSIC JAPAN INC. IN JAPAN." printed on the CD. "MADE IN JAPAN" printed on rear cover and obi. "...1,980 ... (... 1,886 ...)" printed on obi. Rear of obi printed in black. "2ヶ月 期間限定 特別価格" printed in the yellow rectangle on obi (translated: Limited time special price for 2 months). White tray. Additional Japanese insert without back catalogue. Re-released in December 2010 with the same artwork and catalogue numbers.

Animals Discovery Edition



Label: EMI Music Japan Inc.

Catalog numbers:

TOCP-71141/71157 (on case spine)

4 988006 887404 (barcode on obi)

TOCP-71141 (on obi)

TOCP-71141/71157 (on CD)

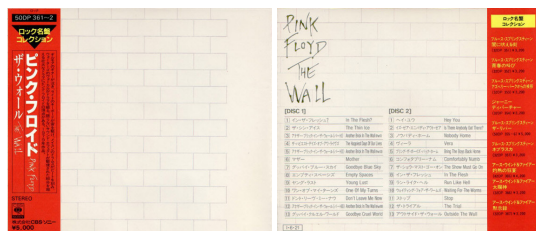
Country of origin: Japan

Release date: September, 2011

Notes: Issued in a glossy gatefold cardboard sleeve with a 12 page re-designed booklet and Japanese insert. Digitally remastered by James Guthrie and Joel Plante at das boot recording in 2011. Includes CD text (band name, album title, song title, composer). CD in plastic inner sleeve. Obi.

It was also sold as a part of the Discovery box.

The Wall



Label: CBS/Sony

Catalog numbers:

50DP 361.2 (on case spine and obi)

50DP 361 (on CD 1)

50DP 362 (on CD 2)

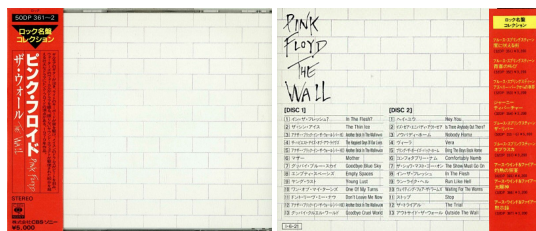
Country of origin: Japan

Release date: June 21, 1985

Notes: Issued in a thick box with a 40 page Japanese booklet with English and Japanese text and with box-type obi. This issue has not the bricks printed entirely to the right border. A white, unprinted surface is visible. It is unknown whether this is a misprint or the very first issue of this CD with the front artwork simply scaled down from the vinyl issue and not adapted to fit the CD case. Issued with a 29x50 mm sticker.



The Wall



Label: CBS/Sony

Catalog numbers:

50DP 361.2 (on case spine and obi)

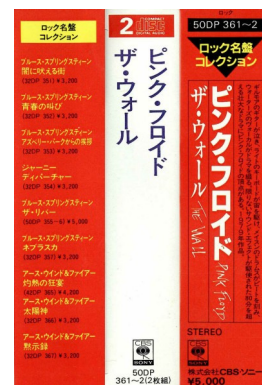
50DP 361 (on CD 1)

50DP 362 (on CD 2)

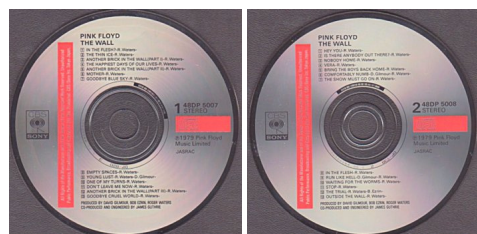
Country of origin: Japan

Release date: 1985

Notes: Issued in a thick box with a 40 page Japanese booklet with English and Japanese text. Box-type obi. Issued with a 29x50 mm sticker.



The Wall



Label: CBS/Sony

Catalog numbers:

48DP 5007~8 (on case spine and obi)

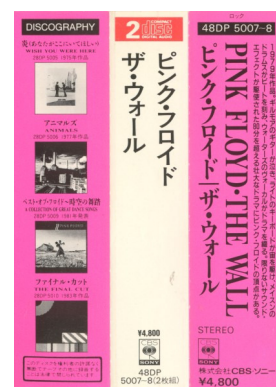
48DP 5007 (on CD 1)

48DP 5008 (on CD 2)

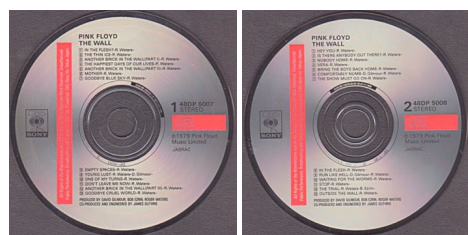
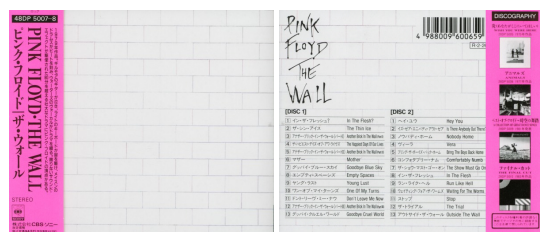
Country of origin: Japan

Release date: February 26, 1988

Notes: Issued in a thick box with a 48 page Japanese booklet and an obi.



The Wall



Label: CBS/Sony

Catalog numbers:

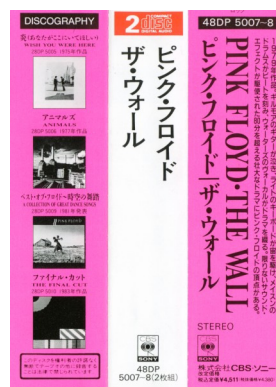
48DP 5007~8 (on case spine and obi)

48DP 5007 (on CD 1)

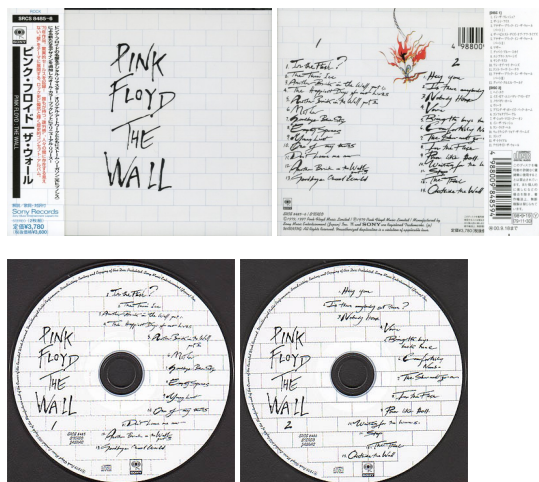
48DP 5008 (on CD 2)

Country of origin: Japan

Notes: Reissue with the same catalog number but with a new price and slight differences in obi details. Issued in a thick box with a 48 page Japanese booklet and an obi.



The Wall



Label: CBS/Sony

Catalog numbers:

SRCS 8485.6 (on case spine and obi)

4 988009 848594 (barcode on obi)

Country of origin: Japan

Release date: September 19, 1998

Notes: Issued in a thick box with a 24 page booklet, an additional 6 page Japanese fold out and an obi.



The Wall



Label: Toshiba-EMI

Catalog numbers:

TOCP-65562.3 (on case spine and obi)

4 988006 782730 (barcode on obi)

TOCP-65562 (7243 8 31423 2 9) (on CD 1)

TOCP-65563 (7243 8 31423 2 9) (on CD 2)

Country of origin: Japan

Release date: June 28, 2000

Notes: Issued in a thick box with a booklet, an additional Japanese paper insert and an obi.



The Wall



Label: Toshiba-EMI

Catalog numbers:

TOCP-65742.43 (on spine and obi)

4 988006 791824 (barcode on obi)

TOCP-65742 (on CD 1)

TOCP-65743 (on CD 2)

Country of origin: Japan

Release date: June 16, 2001

Notes: Issued in a mini LP gatefold sleeve. Includes a clear plastic overlay with the title, obi, inner sleeves, paper inserts and copies of record labels.

For complete content description and further details see also 'Appendix: Cardboard Sleeve LP Replica'.

The Wall



Label: EMI

Catalog numbers:

TOCP-53810.11 (on case spine and obi)

4 988006 846661 (barcode on obi)

? (on CD 1)

? (on CD 2)

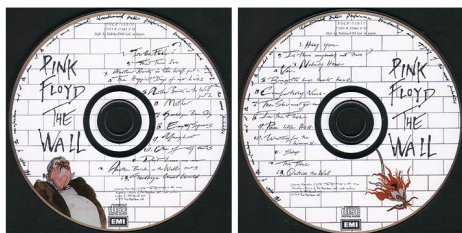
Country of origin: Japan

Release date: September 6, 2006

Notes: Remastered reissue under the "Rock UK" series. Issued in a thick box with an obi, booklet and a paper insert. The obi has an additional info printed on the rear (shown).

The Wall





Label: EMI

Catalog numbers:

TOCP-53810.11 (on case spine and obi)

4 988006 846661 (barcode on obi)

? (on CD 1)

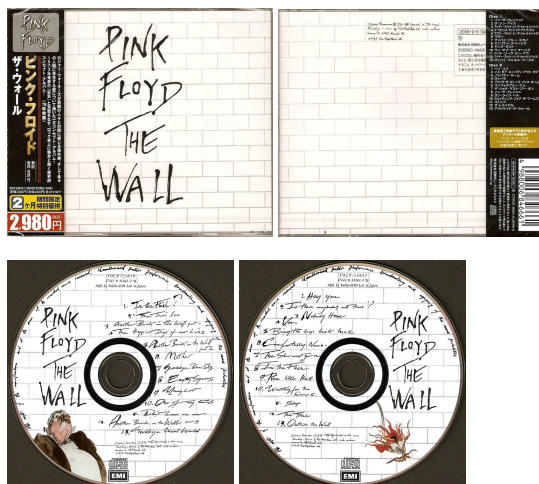
? (on CD 2)

Country of origin: Japan

Release date: October 3, 2007.

Notes: Remastered 2007 reissue under the "EMI 100" series. Issued in a thick box with an obi, booklet and a Japanese b/w fold out insert. "EMI 100 ..." on gold rectangle printed on top of rear of obi. The obi has an additional info printed on the rear (shown).

The Wall



Label: EMI

Catalog numbers:

TOCP-53810•11 (on case spine and obi)

4 988006 846661 (barcode on obi)

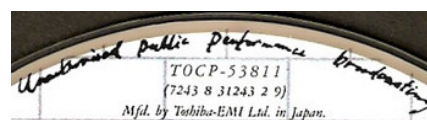
TOCP 53810 (7243 8 31243 2 9) (on CD1)

TOCP 53811 (7243 8 31243 2 9) (on CD2)

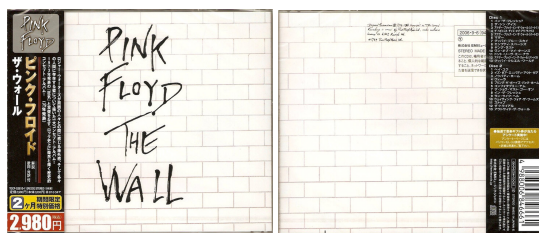
Country of origin: Japan

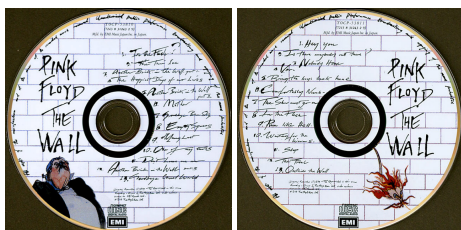
Release date: December 2009

Notes: 2009 reissue in a double thick box with a 24 page booklet and a Japanese 24 page b/w fold out insert. 1994 remaster. "Mfd. by Toshiba-EMI Ltd. In Japan." printed on the CDs. "MADE IN JAPAN" printed on rear cover and obi. "...2,980 ... (... 2,838 ...)" printed on obi. Rear of obi printed in black. "2ヶ月 期間限定 特別価格" printed in the yellow rectangle on obi (translated: Limited time special price for 2 months). White trays. Additional Japanese insert without back catalogue.



The Wall





Label: EMI

Catalog numbers:

TOCP-53810-11 (on case spine and obi)

4 988006 846661 (barcode on obi)

TOCP 53810 (7243 8 31243 2 9) (on CD1)

TOCP 53811 (7243 8 31243 2 9) (on CD2)

Country of origin: Japan

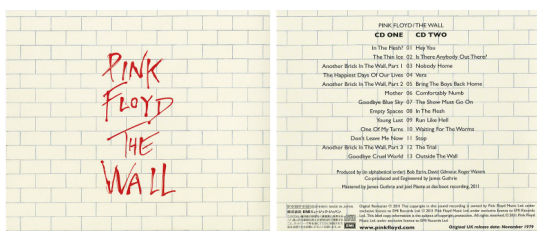
Release date: December 2009

Notes: 2009 reissue, same issue as the issue above. The only difference: "Mfd. by EMI Music Japan Inc. in Japan." printed on the CDs.

Re-released in December 2010 with the same artwork and catalogue numbers.



The Wall Discovery Edition



Label: EMI Music Japan Inc.

Catalog numbers:

TOCP-71142-43 (on case spine)

4 988006 887411 (barcode on obi)

TOCP-71142-43 (on obi)

TOCP-71142/71158 (on CD1)

TOCP-71143/71159 (on CD 2)

Country of origin: Japan

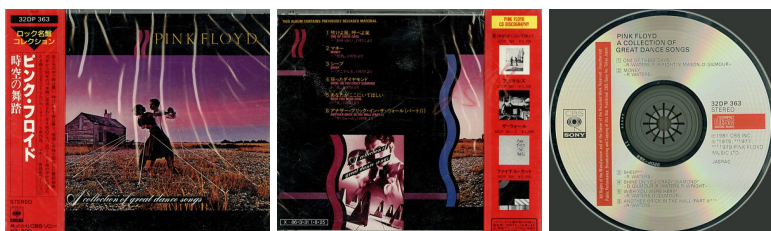
Release date: September, 2011

Notes: Issued in a glossy gatefold cardboard sleeve with a 24 page re-designed booklet and Japanese insert. Digitally remastered by James Guthrie and Joel Plante at das boot recording in 2011. Includes CD text (band name, album title, song title, composer).

CD in plastic inner sleeve. Obi.

It was also sold as a part of the Discovery box.

A Collection of Great Dance Songs



Label: CBS/Sony

Catalog numbers:

32DP 363 (on case spine and obi)

Country of origin: Japan



Notes: Issued in a standard jewel case with a 32 page Japanese booklet and a boxed obi.

A Collection of Great Dance Songs



Label: CBS/Sony

Catalog numbers:

28DP 5009 (on case spine, CD, cover and obi)

4 988009 600758 (barcode on rear cover)

Country of origin: Japan

Notes: Issued in a standard jewel case with a Japanese booklet and an obi.



A Collection of Great Dance Songs



Label: CBS/Sony

Catalog numbers:

28DP 5009 (on case spine, CD, cover and obi)

4 988009 600758 (barcode on rear cover)

Country of origin: Japan

Notes: Reissue with the same catalog number but with a new price and slight differences in obi details.

Issued in a standard jewel case with a Japanese booklet and an obi.



A Collection of Great Dance Songs



Label: Sony

Catalog numbers:

SRCS 8487 (on case spine, obi and CD)

4 988009 848792 (barcode on obi and rear cover)

Country of origin: Japan

Notes: Issued in a standard jewel case with a booklet, an additional Japanese paper insert and an obi.



A Collection of Great Dance Songs



Label: Toshiba-EMI

Catalog numbers:

TOCP-65564 (on case spine and obi)

4 988006 782785 (barcode on obi)

TOCP-65564 (5 262452 2) (on CD)

Country of origin: Japan

Notes: Issued in a standard jewel case with a 16 page booklet, an additional Japanese paper insert and an obi.



A Collection of Great Dance Songs



Label: Toshiba-EMI

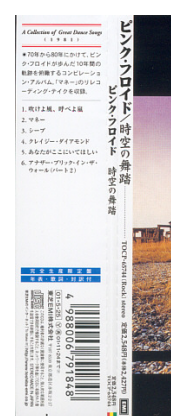
Catalog numbers:

TOCP-65744 (on spine, obi and CD)

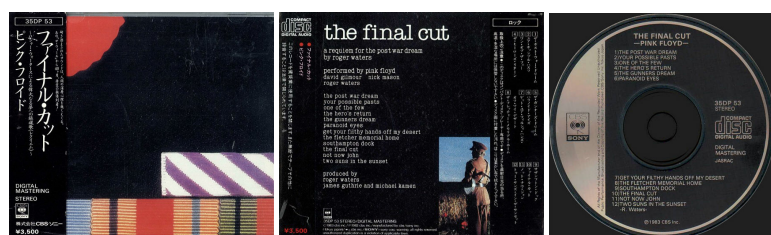
4 988006 791848 (barcode on obi)

Country of origin: Japan

Notes: Issued in a mini LP sleeve. Issued with an obi, inner sleeve, paper inserts and copies of record labels. For complete content description and further details see also 'Appendix: Cardboard Sleeve LP Replica'.



The Final Cut



Label: CBS/Sony

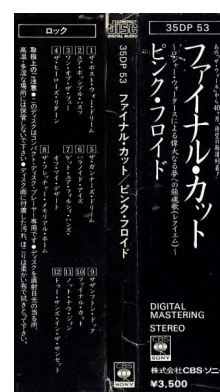
Catalog numbers:

35DP 53 (on case spine, rear cover and CD)

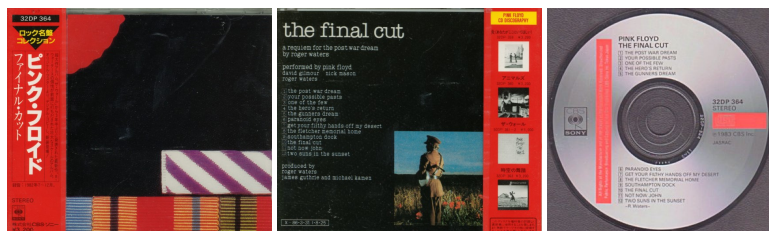
Country of origin: Japan

Release date: 1983

Notes: Issued in a standard jewel case with a 20 page Japanese booklet (text in English and Japanese) and a boxed obi.



The Final Cut



Label: CBS/Sony

Catalog numbers:

32DP 364 (on case spine, obi, rear cover and CD)

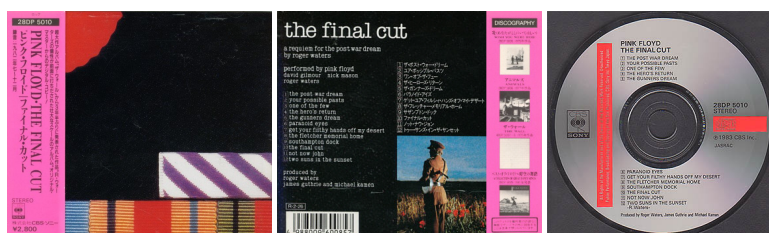
Country of origin: Japan

Release date: August 25, 1985

Notes: Issued in a standard jewel case with a Japanese booklet and a boxed obi.



The Final Cut



Label: CBS/Sony

Catalog numbers:

28DP 5010 (on case spine, CD, cover and obi)

4 988009 600857 (barcode on rear cover)

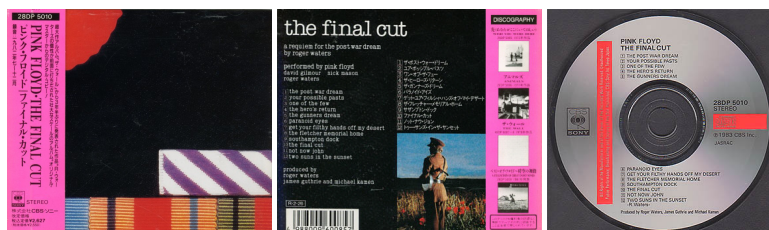
Country of origin: Japan

Release date: February 26, 1988

Notes: Issued in a standard jewel case with a Japanese booklet and an obi.



The Final Cut



Label: CBS/Sony

Catalog numbers:

28DP 5010 (on case spine, CD, cover and obi)

4 988009 600857 (barcode on rear cover)

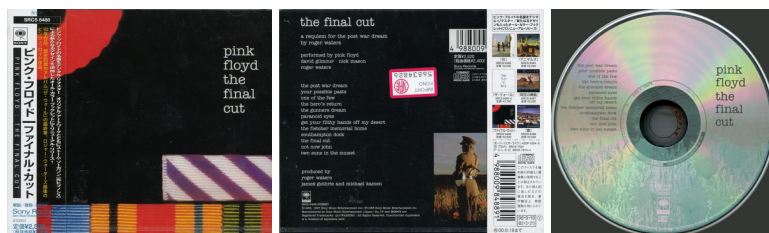
Country of origin: Japan

Notes: Reissue with the same catalog number but with a new price and slight differences in obi details.

Issued in a standard jewel case with a Japanese booklet and an obi.



The Final Cut



Label: CBS/Sony

Catalog numbers:

SRCS 8488 (on case spine and obi)



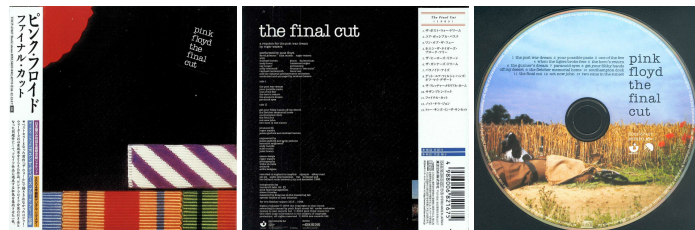
4 988009 848891 (barcode on obi)

Country of origin: Japan

Release date: September 19, 1998

Notes: Issued in a standard jewel case with a booklet, an additional Japanese paper insert and an obi.

The Final Cut



Label: Toshiba-EMI

Catalog numbers:

TOCP-67407 (on spine, obi and CD)

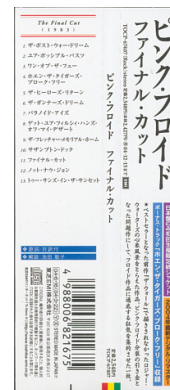
4 988006 821675 (barcode on obi)

Country of origin: Japan

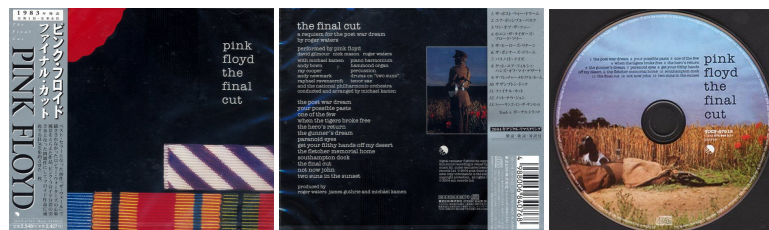
Release date: June 16, 2004

Notes: 2004 remastered edition with "When the Tigers Broke Free". Issued in a mini LP gatefold sleeve with an obi. Also includes a paper insert and small title sticker on the cover.

For complete content description and further details see also 'Appendix: Cardboard Sleeve LP Replica'.



The Final Cut



Label: Toshiba-EMI

Catalog numbers:

TOCP-67915 (on spine, obi and CD)

4 988006 840768 (barcode on obi)

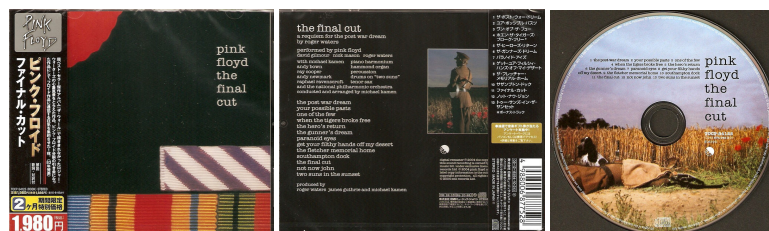
Country of origin: Japan

Release date: March 8, 2006

Notes: Issued in a standard jewel case with a booklet, an additional Japanese paper insert and an obi.



The Final Cut



Label: EMI

Catalog numbers:

TOCP-54125 (on case spine and obi)

4 988006 877528 (barcode on rear obi)

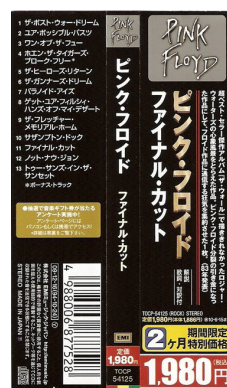
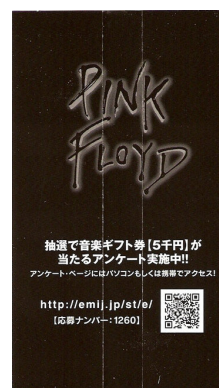
TOCP-54125 (7243 576 734 2 9) (on CD)

Country of origin: Japan

Release date: December 2009

Notes: 2009 reissue in a standard jewel case with a 16 page booklet and a Japanese 16 page b/w fold out insert. 2004 remaster. With the additional track "When The Tigers Broke Free". "Mfd. by EMI Music Japan Inc. in Japan." printed on the CD. "MADE IN JAPAN" printed on rear cover and obi. "...1,980 ... (... 1,886 ...)" printed on obi. Rear of obi printed in black. "2ヶ月 期間限定 特別価格" printed in the yellow rectangle on obi (translated: Limited time special price for 2 months). Black tray. Additional Japanese insert without back catalogue.

Re-released in December 2010 with the same artwork and catalogue numbers.



The Final Cut Discovery Edition



Label: EMI Music Japan Inc.

Catalog numbers:

TOCP-71144/71160 (on case spine)

4 988006 887428 (barcode on obi)

TOCP-71144 (on obi)

TOCP-71144/71160 (on CD)

Country of origin: Japan

Release date: September, 2011

Notes: Issued in a glossy gatefold cardboard sleeve with a 12 page re-designed booklet and Japanese insert. Digitally remastered by James Guthrie and Joel Plante at das boot recording in 2011. Includes CD text (band name, album title, song title, composer). CD in plastic inner sleeve. Obi. It was also sold as a part of the Discovery box.

A Momentary Lapse of Reason



Label: CBS/Sony

Catalog numbers:

32DP 820 (on case spine, CD, obi and rear cover)

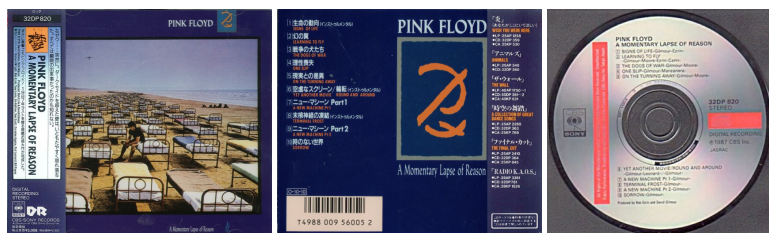
T4988 009 56005 2 (barcode on rear cover)

Country of origin: Japan

Release date: October 10, 1987

Notes: Issued in a standard jewel case with a 24 page Japanese booklet and an obi.

A Momentary Lapse of Reason



Label: CBS/Sony

Catalog numbers:

32DP 820 (on case spine, CD, obi and rear cover)

T4988 009 56005 2 (barcode on rear cover)

Country of origin: Japan

Release date: October 10, 1987

Notes: Reissue with the same catalog number but with a new price and slight differences in obi details. Issued in a standard jewel case with a 24 page Japanese booklet and an obi.

A Momentary Lapse of Reason



Label: CBS/Sony

Catalog numbers:

SRCS 8489 (on case spine and obi)

4 988009 848990 (barcode on obi)

Country of origin: Japan

Release date: September 19, 1998

Notes: Issued in a standard jewel case with a 20 page booklet, an additional 8 page Japanese fold out and an obi.



A Momentary Lapse of Reason



Label: Sony

Catalog numbers:

MHCP 685 (on spine)

4 571191 051608 (barcode on rear cover)

MHCP 685 (on CD)

Country of origin: Japan

Release date: Mai 18, 2005

Notes: Issued in a mini LP gatefold sleeve with an obi and silver sticker on front. Also includes: picture inner sleeve, paper insert with English and Japanese lyrics and copies of vinyl labels.

For complete content description and further details see also 'Appendix: Cardboard Sleeve LP Replica'.



A Momentary Lapse of Reason



Label: EMI

Catalog numbers:

TOCP-54126 (on case spine and obi)

4 988006 877535 (barcode on rear obi)

TOCP-54126 (on CD)

Country of origin: Japan

Release date: December 2009

Notes: 2009 reissue in a standard jewel case with a 20 page booklet and a Japanese 8 page b/w fold out insert. 1997 remaster.

"Mfd. by EMI Music Japan Inc. in Japan." printed on the CD. "MADE IN JAPAN" printed on rear cover and obi. "...1,980 ... (... 1,886 ...)" printed on obi. Rear of obi printed in black. "2ヶ月 期間限定 特別価格" printed in the yellow rectangle on obi (translated:

Limited time special price for 2 months). Black tray. Additional Japanese insert without back catalogue.

Re-released in December 2010 with the same artwork and catalogue numbers.



A Momentary Lapse of Reason Discovery Edition



Label: EMI Music Japan Inc.

Catalog numbers:

TOCP-71145/71161 (on case spine)

4 988006 887435 (barcode on obi)

TOCP-71145 (on obi)

TOCP-71145/71161 (on CD)

Country of origin: Japan

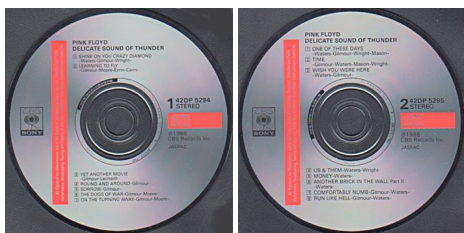
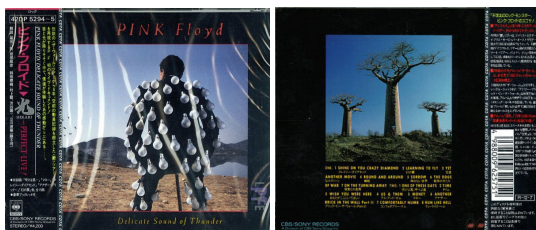
Release date: September, 2011

Notes: Issued in a glossy gatefold cardboard sleeve with a 12 page re-designed booklet and Japanese insert. Digitally remastered by James Guthrie and Joel Plante at das boot recording in 2011. Includes CD text (band name, album title, song title, composer). CD in plastic inner sleeve. Obi. The man on front cover has a mirror in his hand.

It was also sold as a part of the Discovery box.



Delicate Sound of Thunder



Label: CBS/Sony

Catalog numbers:

42DP 5294~5 (on case spine and obi)

4 988009 625751 (barcode on obi and rear cover)

42DP 5294 (on CD 1)

42DP 5295 (on CD 2)

Country of origin: Japan

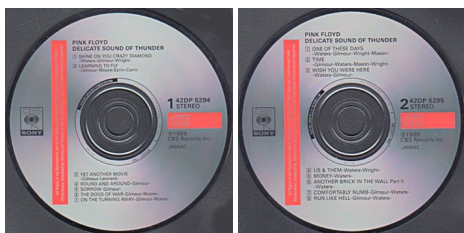
Release date: December 7, 1988

Notes: Issued in a thick box with a 28 page Japanese booklet and an obi.



Delicate Sound of Thunder





Label: CBS/Sony

Catalog numbers:

42DP 5294~5 (on case spine and obi)

4 988009 625751 (barcode on obi and rear cover)

42DP 5294 (on CD 1)

42DP 5295 (on CD 2)

Country of origin: Japan

Release date: December 7, 1988

Notes: Reissue with the same catalog number but with a new price and slight differences in obi details. Issued in a thick box with a 28 page Japanese booklet and an obi.

Delicate Sound of Thunder



Label: Sony

Catalog numbers:

MHCP 686-7 (on spine)

4 571191 051615 (barcode on obi)

MHCP 686 (on CD 1)

MHCP 687 (on CD 2)

Country of origin: Japan

Release date: Mai 18, 2005 (re-released in 2008)

Notes: Issued in a mini LP gatefold sleeve with an obi and silver sticker on front. Also includes: picture inner sleeves, paper insert with English and Japanese lyrics, copies of vinyl labels, sticker and two mini posters. The second release from 2008 is identical with the first release from 2005.

For complete content description and further details see also 'Appendix: Cardboard Sleeve LP Replica'.

The Division Bell



Label: Sony

Catalog numbers:

SRCS 7324 (on case spine, obi and CD)

4 988009 732428 (barcode on rear cover)

Country of origin: Japan

Release date: April 14, 1994

Notes: Issued in a standard jewel case with a 24 page booklet, an additional Japanese paper insert and an obi.

The Division Bell



Label: Sony

Catalog numbers:

MHCP 688 (on spine)

4 571191 051622 (barcode on rear cover and obi)

Country of origin: Japan

Release date: Mai 18, 2005 (re-released in 2008)

Notes: Issued in a mini LP gatefold sleeve with an obi and silver sticker on front. Also includes: picture inner sleeve, paper insert with English and Japanese lyrics and copies of vinyl labels. The second release from 2008 is identical with the first release from 2005.

For complete content description and further details see also 'Appendix: Cardboard Sleeve LP Replica'.



The Division Bell Discovery Edition



Label: EMI Music Japan Inc.

Catalog numbers:

TOCP-71146/71162 (on case spine)

4 988006 887442

TOCP-71146 (on obi)

TOCP-71146/71162 (on CD)

Country of origin: Japan

Release date: September, 2011

Notes: Issued in a glossy gatefold cardboard sleeve with a 12 page re-designed booklet and Japanese insert. Digitally remastered by James Guthrie and Joel Plante at das boot recording in 2011. Includes CD text (band name, album title, song title, composer). CD in plastic inner sleeve. Obi.

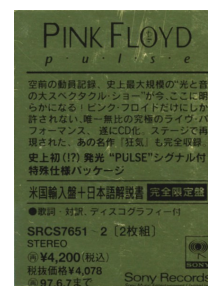
It was also sold as a part of the Discovery box.



Pulse (limited edition with LED)



Label: Sony



Catalog numbers:

SRCS 7651.2 (sticker on cover of outer bag)

4 988009 765129 (barcode)

Country of origin: Japan (see notes)

Notes: Issued in a cardboard slipcase with a red LED on the spine. This is the US release with Japanese sticker and an additional booklet. The CD's are stored inside the front and rear cover of the hardback photobook. The sticker being equivalent to an obi. The additional black and white booklet contains the lyrics for the album and a Pink Floyd Discography.

Pulse (standard edition)**Label:** Sony**Catalog numbers:**

SRCS7813~4 (sticker on cover of outer bag)

4 988009 781327 (barcode on rear cover of booklet)

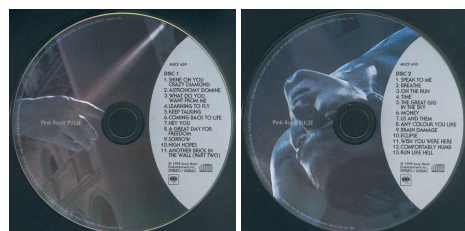
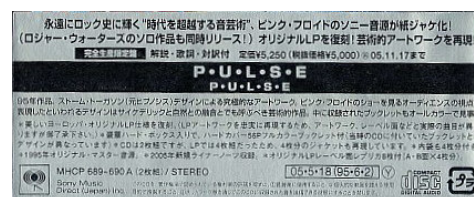
C2K 67064 (on rear cover of slipcase)

SRCS 7813 (on CD 1)

SRCS 7814 (on CD 2)

Country of origin: Japan (Artwork: USA)

Notes: Issued in a cardboard slipcase without a red LED on the spine. Includes a hardback photobook, an additional 32 page Japanese booklet and sticker on the cover of the outer bag. The sticker being equivalent to an obi. The additional black and white booklet contains the lyrics for the album and a Pink Floyd Discography.

*Booklet inside (pages 2-3 and 50-51)***Pulse****Label:** Sony**Catalog numbers:**

MHCP 689-690

4 571191 051639 (barcode on sticker on rear cover)

MHCP 689 (on CD 1)

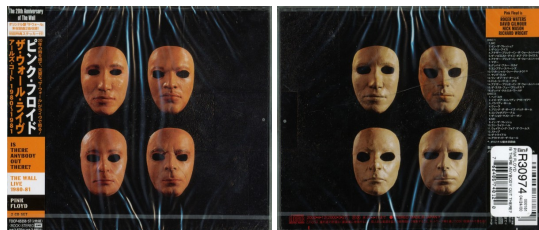
MHCP 690 (on CD 2)

Country of origin: Japan**Release date:** Mai 18, 2005 (re-released in 2008)

Notes: Issued as replica of the LP issue with silver sticker on front and without obi . Also includes: four covers, picture inner sleeves, booklet with English and Japanese lyrics, copies of vinyl labels and hardback photobook. The second release from 2008 is identical with the first release from 2005.

For complete content description and further details see also 'Appendix: Cardboard Sleeve LP Replica'.

Is There Anybody Out There?



Label: Toshiba-EMI

Catalog numbers:

TOCP-65356.57 (on case spine and obi)

4 988006 777859 (barcode on obi)

TOCP-65356 (7243 5 24075 2 1) (on CD 1)

TOCP-65357 (7243 5 24075 2 1) (on CD 2)

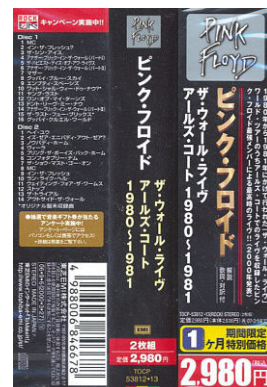
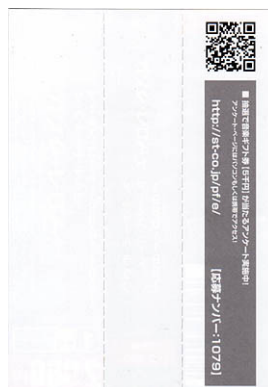
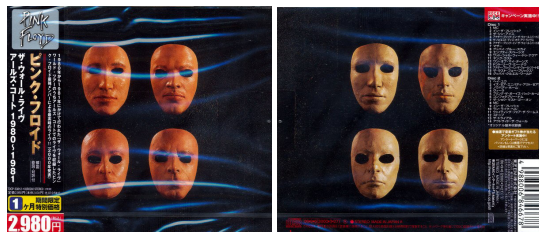
Country of origin: Japan

Release date: April 12, 2000

Notes: Issued in a thick box with two 28 page booklets, a 12 page additional Japanese fold-out and an obi. Some shops have sold the CD with an additional sticker (shown).



Is There Anybody Out There?



Label: EMI

Catalog numbers:

TOCP-53812•13 (on case spine and obi)

4 988006 846678 (barcode on obi)

TOCP-53812 (7243 5 24075 2 1) (on CD 1)

TOCP-53813 (7243 5 24075 2 1) (on CD 2)

Country of origin: Japan

Release date: September 6, 2006

Notes: Remastered reissue under the "Rock UK" series. Issued in a standard case with an obi, booklet and an additional black and white Japanese insert. The obi has an additional info printed on the rear (shown).

Is There Anybody Out There?



Label: EMI

Catalog numbers:

TOCP-5381•13 2 (on case spine and obi)

4 988006 846678 (barcode on obi)

TOCP-53812 (7243 5 24075 2 1) (on CD 1)

TOCP-53813 (7243 5 24075 2 1) (on CD 2)

Country of origin: Japan

Release date: October 3, 2007

Notes: Remastered 2007 reissue under the "EMI 100" series. Issued in a standard case with an obi, booklet and a Japanese b/w fold out insert. "EMI 100 ..." on gold rectangle printed on top of rear of obi. The obi has an additional info printed on the rear (shown).



Is There Anybody Out There?



Label: EMI

Catalog numbers:

TOCP-53812•13 (on case spine and obi)

4 988006 846678 (barcode on obi)

TOCP-53812 (7243 5 24075 2 1) (on CD1)

TOCP-53813 (7243 5 24075 2 1) (on CD2)

Country of origin: Japan

Release date: December 2009

Notes: 2009 reissue in a double thick box with two 28 page booklets and one Japanese 24 page b/w fold out insert. "Mfd. by EMI Music Japan Inc. in Japan." printed on the CDs. "MADE IN JAPAN" printed on rear cover and obi. "...2,980 ... (... 2,838 ...)" printed on obi. Rear of obi printed in black. "2ヶ月 期間限定 特別価格" printed in the yellow rectangle on obi (translated: Limited time special price for 2 months). Clear trays. Without additional Japanese 2 page b/w back catalogue insert. Re-released in December 2010 with the same artwork and catalogue numbers.



Echoes – The Best of Pink Floyd



Label: Toshiba-EMI

Catalog numbers:

TOCP-65910.11 (on case spine and obi and edge of slipcase)

4 988006 797192 (barcode on obi)

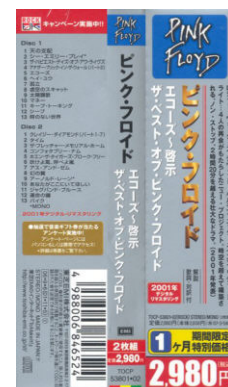
TOCP-65910 7243 536111 2 5 (5361122) (on CD 1)

TOCP-65911 7243 536111 2 5 (5361132) (on CD 2)

Country of origin: Japan

Notes: Issued in a double slimline case inside a card slipcase. Includes a booklet and an additional black and white booklet (shown) with Japanese text. The additional booklet fits between the CD case and the card slipcase

Echoes – The Best of Pink Floyd



Label: EMI

Catalog numbers:

TOCP-53801 (on case spine and obi)

4 988006 846524 (barcode on obi)

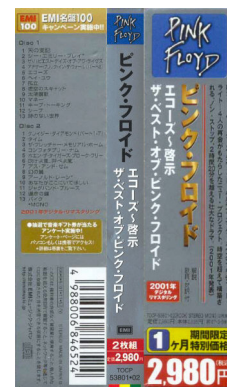
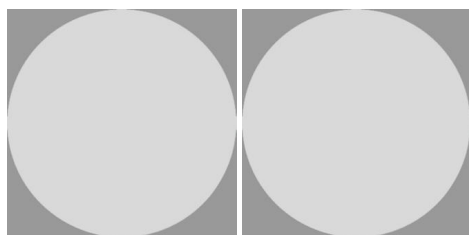
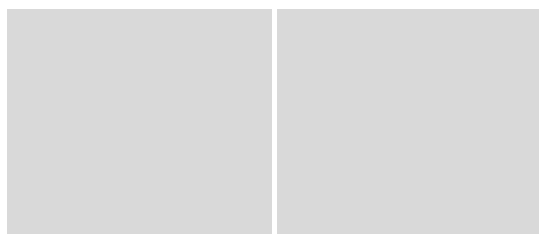
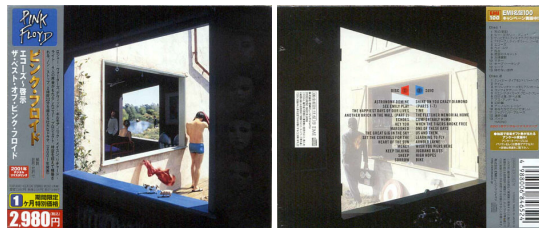
TOCP-53801 and 7243 536111 2 6 (53611221) (on CD 1)

TOCP-53802 and 7243 536111 2 5 (53611132) (on CD 2)

Country of origin: Japan

Notes: Remastered reissue under the "Rock UK" series. Issued in a standard case with an obi, booklet and a paper insert. The obi has an additional info printed on the rear (shown).

Echoes – The Best of Pink Floyd



Label: EMI

Catalog numbers:

TOCP-53801 (on case spine and obi)

4 988006 846524 (barcode on obi)

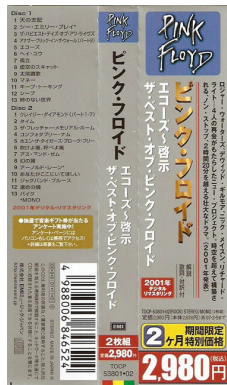
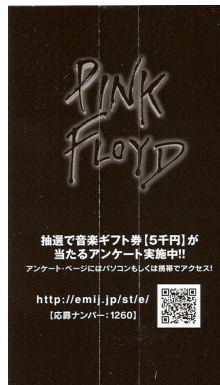
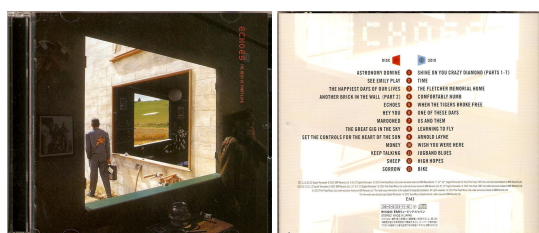
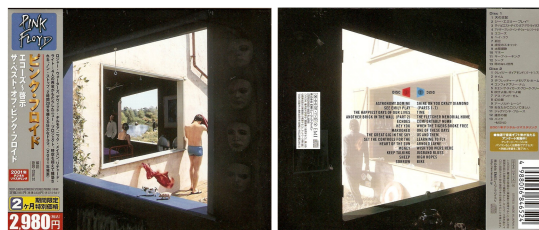
? (on CD 1)

? (on CD 2)

Country of origin: Japan

Notes: Remastered 2007 reissue under the "EMI 100" series. Issued in a standard case with an obi, booklet and a Japanese b/w fold out insert. "EMI 100 ..." on gold rectangle printed on top of rear of obi. The obi has an additional info printed on the rear (shown).

Echoes – The Best of Pink Floyd





Label: EMI

Catalog numbers:

TOCP-53801•02 (on slipcase spine, case spine and obi)

4 988006 846524 (barcode on obi)

TOCP-53801 (5361122) (on CD1)

TOCP-53802 (5361132) (on CD2)

Country of origin: Japan

Release date: December 2009

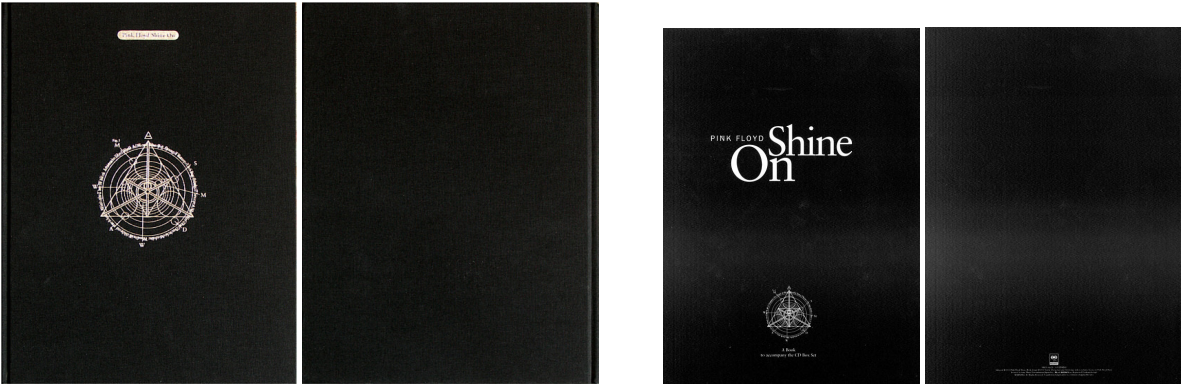
Notes: 2009 reissue in a 2CD jewel case housed in a cardboard slipcase with a 32 page booklet and a 24 page Japanese b/w booklet. "Mfd. by EMI Music Japan Inc. in Japan." printed on the CDs. "MADE IN JAPAN" printed on rear slipcase, rear cover and obi. "...2,980 ... (... 2,838 ...)" printed on obi. Rear of obi printed in black. "2ヶ月 期間限定 特別価格" printed in the yellow rectangle on obi (translated: Limited time special price for 2 months). Clear tray. Additional Japanese booklet without back catalogue on 22nd and 23rd page.

Re-released in December 2010 with the same artwork and catalogue numbers.

PINK FLOYD CD DISCOGRAPHY

JAPAN Box Sets

Shine On



Hardcover book

additional Japanese book



Content of the box
(Japanese book not shown)

Label: Sony Music (on sticker) / Columbia (on Discs)

Catalog numbers:

SRCS 6621-9 (on front sticker)

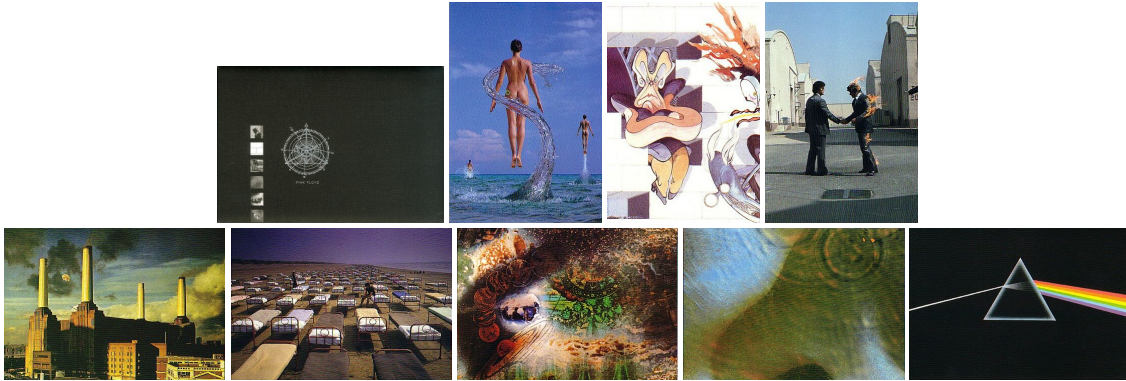
4 988009 662121 (barcode on front sticker)

Country of origin: Box: USA, Sticker on front and additional book: Japan

Release date: 1992

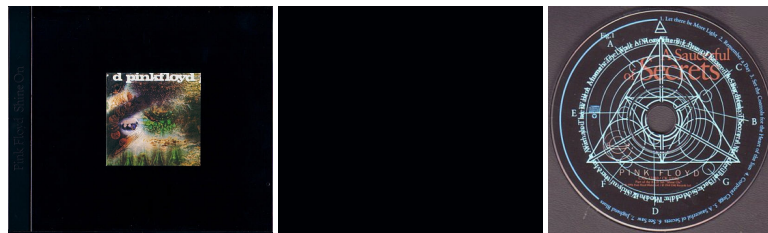
Notes: This is the US issue with an additional Japanese book.

Special 8-CD Boxed Set. Also includes bonus CD digipak of Early Singles and a 112-page hardcover book. A set of eight postcards (shown below) was included in a special envelope.



Each CD is housed in a black jewel case with an album sticker on the front. The CD case also houses a double sided card insert. The spines of these CD cases when lined up will form a prism picture.

A Saucerful of Secrets



Label: Columbia

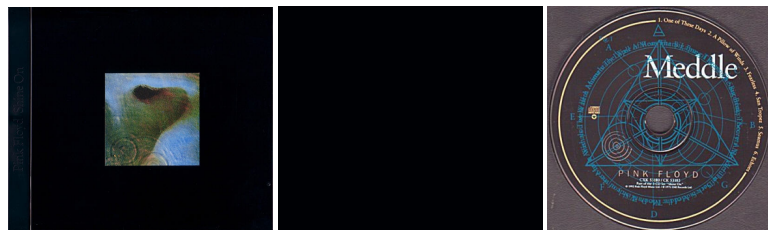
Catalog numbers:

CK 53182 (on CD)

Country of origin: USA

Notes: Issued in a black jewel case with an album sticker on the front and a double sided card insert.

Meddle



Label: Columbia

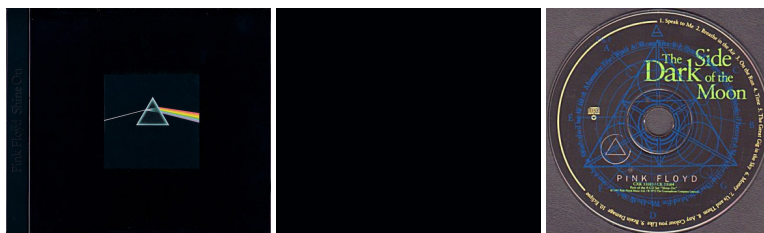
Catalog numbers:

CK 53183 (on CD)

Country of origin: USA

Notes: Issued in a black jewel case with an album sticker on the front and a double sided card insert.

The Dark Side of the Moon



Label: Columbia

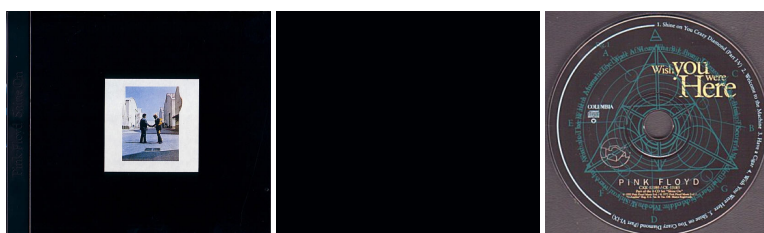
Catalog numbers:

CK 53184 (on CD)

Country of origin: USA

Notes: Issued in a black jewel case with an album sticker on the front and a double sided card insert.

Wish You Were Here



Label: Columbia

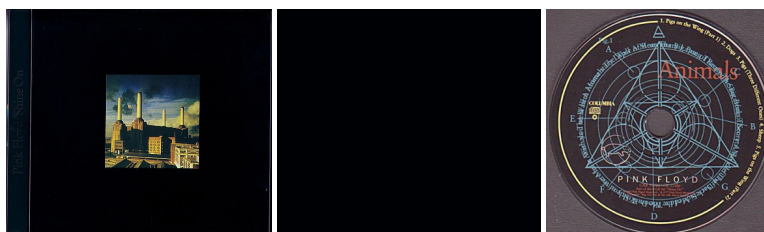
Catalog numbers:

CK 53185 (on CD)

Country of origin: USA

Notes: Issued in a black jewel case with an album sticker on the front and a double sided card insert.

Animals



Label: Columbia

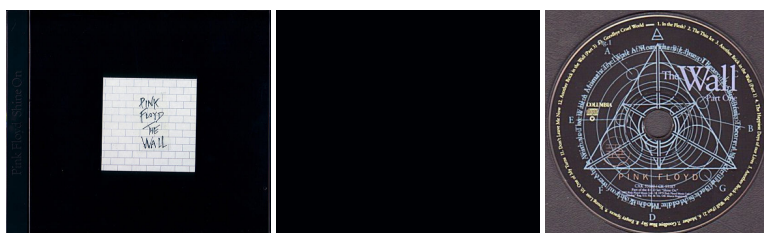
Catalog numbers:

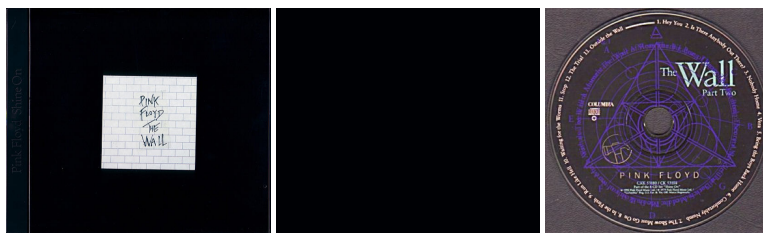
CK 53186 (on CD)

Country of origin: USA

Notes: Issued in a black jewel case with an album sticker on the front and a double sided card insert.

The Wall





Label: Columbia

Catalog numbers:

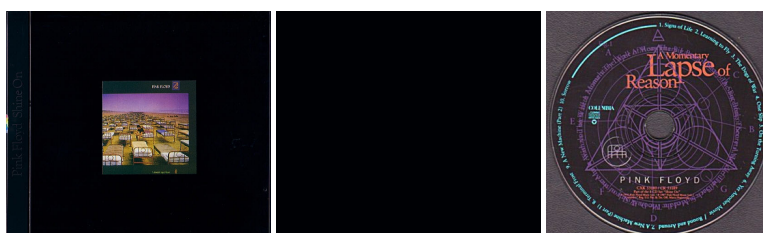
CK 53187 (on CD 1)

CK 53188 (on CD 2)

Country of origin: USA

Notes: Issued in a two separate black jewel cases with an album sticker on the front and a double sided card insert in each case.

A Momentary Lapse of Reason



Label: Columbia

Catalog numbers:

CK 53189 (on CD)

Country of origin: USA

Notes: Issued in a black jewel case with an album sticker on the front and a double sided card insert.

The Early Singles



Label: Columbia

Catalog numbers:

CK 53181 (on CD and rear cover)

Country of origin: USA

Notes: Issued in a black jewel case with an album sticker on the front and a double sided card insert.

Oh By The Way



Label: Toshiba / EMI

Catalog numbers:

TOCP-70444-70459 (on Japanese front and bottom sticker)

4 988006 860148 (on Japanese front sticker)

50999 511267 2 8 and CAT NO.511 2672 (on bottom of the slipcase)

Release Date: February 2008 (Japan), December 2007 (Europe)

Country of origin: Box and CDs: EU, sticker and additional booklet: Japan

Notes: The European limited edition of the box with some Japanese add-ons. The cardboard box set contains all 14 studio albums of the band. The albums are in mini vinyl wallets with all original extras. In addition to the albums the set includes a specially designed 40th anniversary Storm Thorgerson poster featuring 40 Floyd images and two cardboard coasters with the cover art.

Issued in a cardboard slipcase with the European stickers on front and rear, additional Japanese sticker on front and an additional Japanese b/w booklet (shown above) sealed together with the box outside of it.

The European barcode on bottom of the box is hidden under a Japanese white sticker (shown) with the Toshiba catalogue number.

"Made in EU" printed on bottom of the slipcase, on CD's and on the Japanese front sticker.

For complete content description and further details see also the description of this box in 'Appendix: LP Replica'.

The Piper at the Gates of Dawn



Label: EMI

Catalog numbers from this CD:

50999 511225 2 2 (on case spine)

none (on rear cover)

5099951122522 and LC0542 (on CD)

Catalog numbers from the original LP:

none (on case spine)

SX 6157 (on rear cover)

SX 6157 (on CD)

Country of origin: Box: EU, Artwork: no info, CD: EU

Notes: Issued in a mini LP sleeve. No barcode on sleeve.

For complete content description and further details see also 'Appendix: Cardboard Sleeve LP Replica'.

A Saucerful of Secrets



Label: EMI

Catalog numbers from this CD:

50999 511082 2 9 (on case spine)

none (on rear cover)

5099951108229 and LC0542 (on CD)

Catalog numbers from the original LP:

none (on case spine)

SCX 6258 stereo (on rear cover)

SCX 6258 (on CD)

Country of origin: Box: EU, Artwork: no info, CD: EU

Notes: Issued in a mini LP sleeve. No barcode on sleeve.

For complete content description and further details see also 'Appendix: Cardboard Sleeve LP Replica'.

More



Label: EMI

Catalog numbers from this CD:

50999 511090 2 8 (on case spine)

none (on rear cover)

5099951109028 and LC0542 (on CD)

Catalog numbers from the original LP:

none (on case spine)

SCX 6346 (IE 062 04096) stereo (on rear cover)

SCX 6346 (on CD)

Country of origin: Box: EU, Artwork: no info, CD: EU

Notes: Issued in a mini LP sleeve. No barcode on sleeve.

For complete content description and further details see also 'Appendix: Cardboard Sleeve LP Replica'.

Ummagumma



Label: EMI

Catalog numbers from this CD:

50999 511092 2 6 (on case spine)

none (on rear cover)

5099951109325 (5099951109226) and LC0542 (on CD 1)

5099951109424 (5099951109226) and LC0542 (on CD 2)

Catalog numbers from the original LP:

none (on case spine)

SHDW 1/2 (1E 054 04222) (1E 054 042223) stereo (on rear cover)

SHDW 1 (on CD 1)

SHDW 2 (on CD 2)

Country of origin: Box: EU, Artwork: no info, CD: EU

Notes: Issued in a gatefold mini LP sleeve. No barcode on sleeve.

For complete content description and further details see also 'Appendix: Cardboard Sleeve LP Replica'.

Atom Heart Mother



Label: EMI

Catalog numbers from this CD:

50999 511101 2 3 (on case spine)

none (on rear cover)

5099951110123 and LC0542 (on CD)

Catalog numbers from the original LP:

none (on case spine)

none (on rear cover)

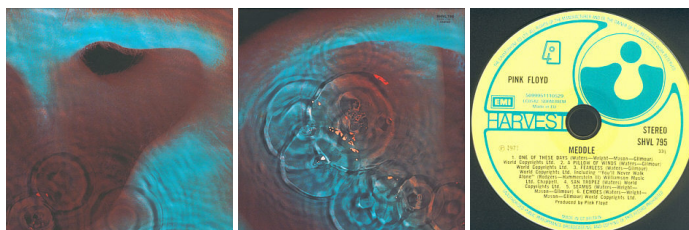
SHVL 781 (on CD)

Country of origin: Box: EU, Artwork: no info, CD: EU

Notes: Issued in a gatefold mini LP sleeve. No barcode on sleeve.

For complete content description and further details see also 'Appendix: Cardboard Sleeve LP Replica'.

Meddle



Label: EMI

Catalog numbers from this CD:

50999 511105 2 9 (on case spine)

none (on rear cover)

5099951110529 and LC0542 (on CD)

Catalog numbers from the original LP:

none (on case spine)

SHVL 795 (1E 064 04917) stereo (on rear cover)

SHVL 795 (on CD)

Country of origin: Box: EU, Artwork: no info, CD: EU

Notes: Issued in a gatefold mini LP sleeve. No barcode on sleeve.

For complete content description and further details see also 'Appendix: Cardboard Sleeve LP Replica'.

Obscured by Clouds



Label: EMI

Catalog numbers from this CD:

50999 511089 2 2 (on case spine)

none stereo (on rear cover)

5099951108922 and LC0542 (on CD)

Catalog numbers from the original LP:

none (on case spine)

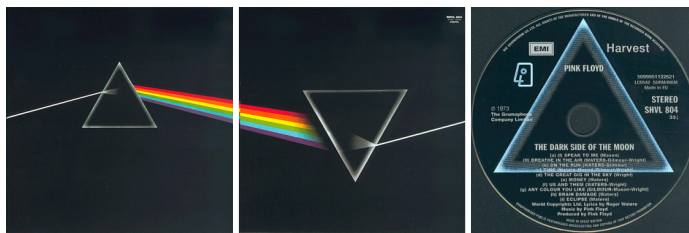
SHSP 4020 (1E 062 05054) stereo (on rear cover)

SHSP 4020 (on CD)

Country of origin: Box: EU, Artwork: no info, CD: EU

Notes: Issued in a mini LP sleeve with rounded corner. No barcode on sleeve.
For complete content description and further details see also 'Appendix: Cardboard Sleeve LP Replica'.

The Dark Side of the Moon



Label: EMI

Catalog numbers from this CD:

50999 511226 2 1 (on case spine)

none (on rear cover)

5099951122621 and LC0542 (on CD)

Catalog numbers from the original LP:

none (on case spine)

SHVL 804 (1E 064 05249) stereo (on rear cover)

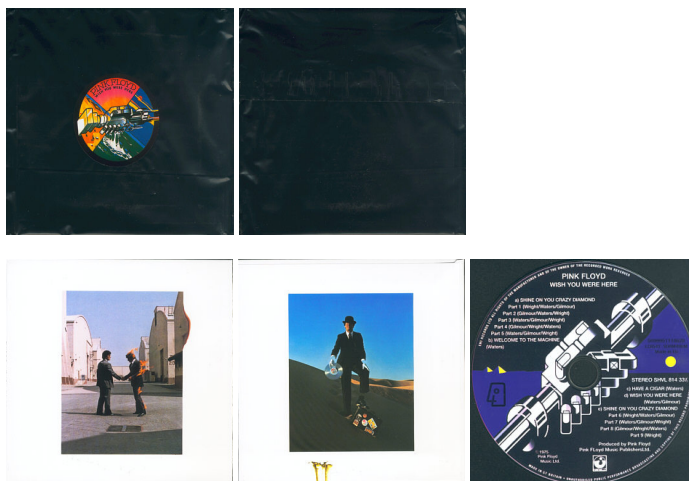
SHVL 804 (on CD)

Country of origin: Box: EU, Artwork: no info, CD: EU

Notes: Issued in a gatefold mini LP sleeve. Also included two posters and two stickers. No barcode on sleeve.

For complete content description and further details see also 'Appendix: Cardboard Sleeve LP Replica'.

Wish You Were Here



Label: EMI

Catalog numbers from this CD:

50999 511106 2 8 (on case spine)

none (on rear cover)

5099951110628 and LC0542 (on CD)

Catalog numbers from the original LP:

none (on case spine)

none (on rear cover)

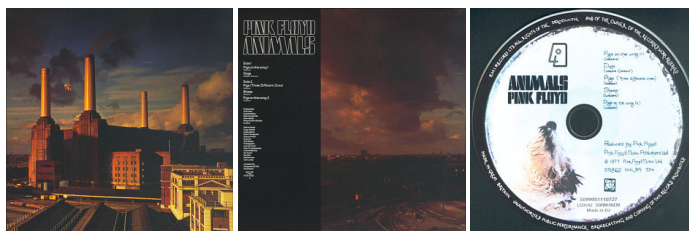
SHVL 814 (on CD)

Country of origin: Box: EU, Artwork: no info, CD: EU

Notes: Issued in a mini LP sleeve in a black resalable plastic bag. Includes an inner sleeve and a mini postcard. No barcode on sleeve.

For complete content description and further details see also 'Appendix: Cardboard Sleeve LP Replica'.

Animals



Label: EMI

Catalog numbers from this CD:

50999 511107 2 7 (on case spine)

none (on rear cover)

5099951110727 and LC0542 (on CD)

Catalog numbers from the original LP:

none (on case spine)

SHVL 815 stereo 0C064 98 434 (on rear cover)

SHVL 815 (on CD)

Country of origin: Box: EU, Artwork: no info, CD: EU

Notes: Issued in a gatefold mini LP sleeve. Includes an inner sleeve. No barcode on sleeve.

For complete content description and further details see also 'Appendix: Cardboard Sleeve LP Replica'.

The Wall



Label: EMI

Catalog numbers from this CD:

50999 511108 2 6 (on case spine)

none (on rear cover)

5099951110925 (5099951110826) and LC0542 (on CD 1)

5099951111021 (5099951110826) and LC0542 (on CD 2)

Catalog numbers from the original LP:

none (on case spine)

none (on rear cover)

SHDW 412 and SHSP 4111 (on CD 1)

SHDW 411 and SHSP 4112 (on CD 2)

Country of origin: Box: EU, Artwork: no info, CD: EU

Notes: Issued in a gatefold mini LP sleeve. Includes two inner sleeves, sleeve from CD 2 misprinted.

Sticker on front of artwork. No barcode on sleeve.

For complete content description and further details see also 'Appendix: Cardboard Sleeve LP Replica'.

The Final Cut



Label: EMI

Catalog numbers from this CD:

50999 511111 2 0 (on case spine)

none (on rear cover)

5099951111120 and LC0542 (on CD)

Catalog numbers from the original LP:

none (on case spine)

stereo shpf 1983 0C 064-65 042 tm 8303 gl (on rear cover)

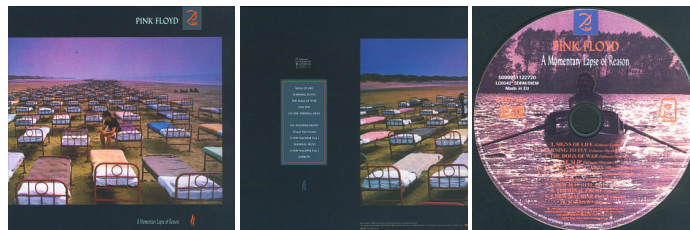
stereo shpf 1983 (on CD)

Country of origin: Box: EU, Artwork: no info, CD: EU

Notes: Issued in a gatefold mini LP sleeve. Includes When The Tigers Broke Free, the song is listed in the tracklist on rear cover. No barcode on sleeve.

For complete content description and further details see also 'Appendix: Cardboard Sleeve LP Replica'.

A Momentary Lapse of Reason



Label: EMI

Catalog numbers from this CD:

none (on case spine)

50999 511227 2 0 (on rear cover)

5099951122720 and LC0542 (on CD)

Catalog numbers from the original LP:

none (on case spine)

EMD1003, TCMD1003, CDEMD1003 and 74 8068 1 (on rear cover)

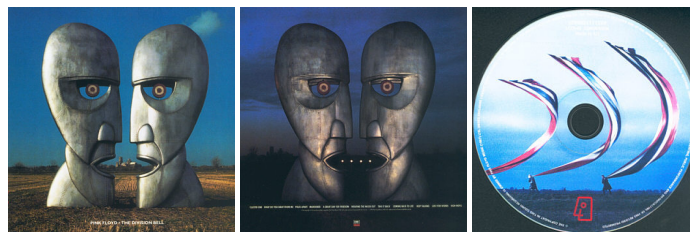
EMD 1003 (on CD)

Country of origin: Box: EU, Artwork: no info ('Printed in England' on LP sleeve), CD: EU

Notes: Issued in a gatefold mini LP sleeve. Includes an inner sleeve. No barcode on sleeve.

For complete content description and further details see also 'Appendix: Cardboard Sleeve LP Replica'.

The Division Bell



Label: EMI

Catalog numbers from this CD:

50999 511112 2 9 (on case spine)

none (on rear cover)

5099951111229 and LC0542 (on CD)

Catalog numbers from the original LP:

none (on case spine)

none (on CD)

Country of origin: Box: EU, Artwork: no info, CD: EU

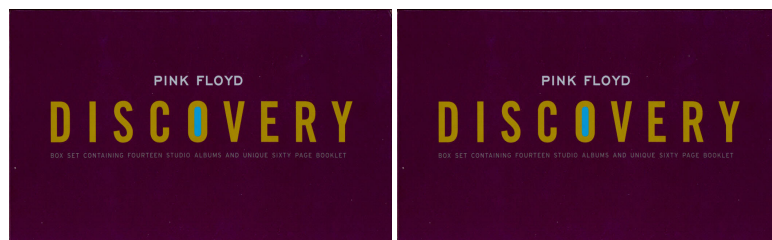
Notes: Issued in a gatefold mini LP sleeve. Includes an inner sleeve. No barcode on sleeve.

For complete content description and further details see also 'Appendix: Cardboard Sleeve LP Replica'.

Discovery



Sealed Box



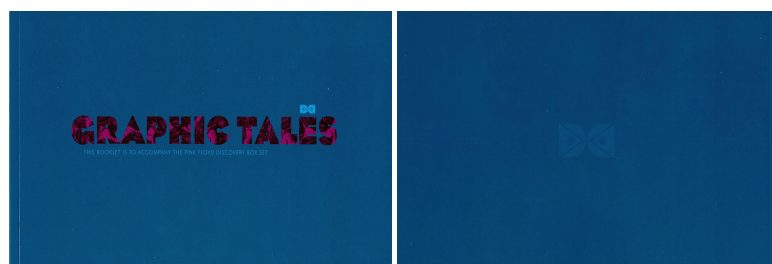
Opened Box



Obi



Japanese insert



Book

Label: EMI

Catalog numbers:

none (on box)

TOCP 71147~62 (on obi)

4 988006 887459 (barcode on obi)

Release date: September 2011

Country of origin: Japan

Notes: Cardboard box set with magnetic catch that contains all the 14 studio albums done by the band. The albums are in gatefold cardboard sleeves, all with stickers on the shrinkwrap and with re-designed booklets. In addition to the albums, a paperback book titled 'Graphic Tales' is included. Also included is an obi with photos of the content and Japanese insert.

The Piper at the Gates of Dawn



Label: EMI Music Japan Inc.

Catalog numbers:

TOCP-71131/71147 (on case spine)

TOCP-71131/71147 (on CD)

Country of origin: Japan

Release date: September, 2011

Notes: Issued in a glossy gatefold cardboard sleeve with a 12 page re-designed booklet and Japanese insert. Digitally remastered by James Guthrie and Joel Plante at das boot recording in 2011. Includes CD text (band name, album title, song title, composer). No obi. CD in plastic inner sleeve. It was also sold separately (with obi) as Discovery Edition CD as part of the 'Why Pink Floyd?' campaign.

A Saucerful of Secrets



Label: EMI Music Japan Inc.

Catalog numbers:

TOCP-71132/71148 (on case spine)

TOCP-71132/71148 (on CD)

Country of origin: Japan

Release date: September, 2011

Notes: Issued in a glossy gatefold cardboard sleeve with a 12 page re-designed booklet and Japanese insert. Digitally remastered by James Guthrie and Joel Plante at das boot recording in 2011. Includes CD text (band name, album title, song title, composer). No obi. CD in plastic inner sleeve. It was also sold separately (with obi) as Discovery Edition CD as part of the 'Why Pink Floyd?' campaign.

More



Label: EMI Music Japan Inc.

Catalog numbers:

TOCP-71133/71149 (on case spine)

TOCP-71133/71149 (on CD)

Country of origin: Japan

Release date: September, 2011

Notes: Issued in a glossy gatefold cardboard sleeve with a 12 page re-designed booklet and Japanese insert. Digitally remastered by James Guthrie and Joel Plante at das boot recording in 2011. Includes CD text (band name, album title, song title, composer). No obi. CD in plastic inner sleeve. It was also sold separately (with obi) as Discovery Edition CD as part of the 'Why Pink Floyd?' campaign.

TOCP-71137/71153 (on CD)

Country of origin: Japan**Release date:** September, 2011

Notes: Issued in a glossy gatefold cardboard sleeve with a 12 page re-designed booklet and Japanese insert. Digitally remastered by James Guthrie and Joel Plante at das boot recording in 2011. Includes CD text (band name, album title, song title, composer). No obi. CD in plastic inner sleeve. It was also sold separately (with obi) as Discovery Edition CD as part of the 'Why Pink Floyd?' campaign.

Obscured by Clouds**Label:** EMI Music Japan Inc.**Catalog numbers:**

TOCP-71138/71154 (on case spine)

TOCP-71138/71154 (on CD)

Country of origin: Japan**Release date:** September, 2011

Notes: Issued in a glossy gatefold cardboard sleeve with an 8 page re-designed booklet and Japanese insert. Digitally remastered by James Guthrie and Joel Plante at das boot recording in 2011. Includes CD text (band name, album title, song title, composer). No obi. v It was also sold separately (with obi) as Discovery Edition CD as part of the 'Why Pink Floyd?' campaign.

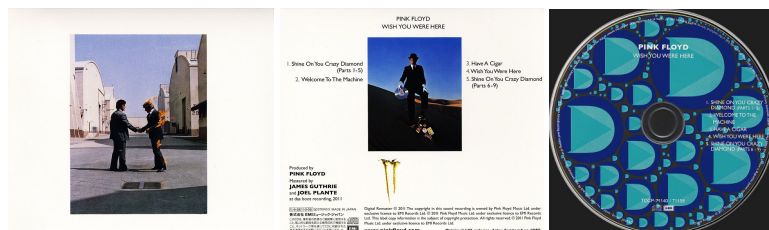
The Dark Side of the Moon**Label:** EMI Music Japan Inc.**Catalog numbers:**

TOCP-71139/71155 (on case spine)

TOCP-71139/71155 (on CD)

Country of origin: Japan**Release date:** September, 2011

Notes: Issued in a glossy gatefold cardboard sleeve with a 12 page re-designed booklet and Japanese insert. Digitally remastered by James Guthrie and Joel Plante at das boot recording in 2011. Includes CD text (band name, album title, song title, composer). No obi. CD in plastic inner sleeve. It was also sold separately (with obi) as Discovery Edition CD as part of the 'Why Pink Floyd?' campaign.

Wish You Were Here**Label:** EMI Music Japan Inc.**Catalog numbers:**

TOCP-71140/71156 (on case spine)

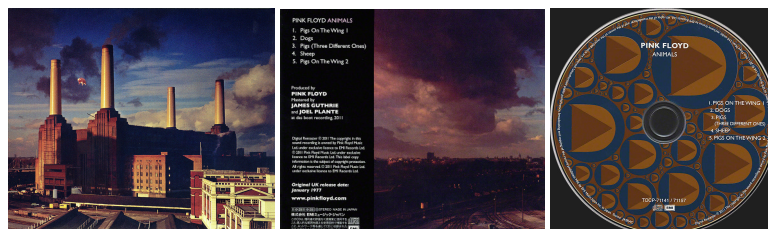
TOCP-71140/71156 (on CD)

Country of origin: Japan

Release date: September, 2011

Notes: Issued in a glossy gatefold cardboard sleeve with a 12 page re-designed booklet and Japanese insert. Digitally remastered by James Guthrie and Joel Plante at das boot recording in 2011. Includes CD text (band name, album title, song title, composer). No obi. CD in plastic inner sleeve. It was also sold separately (with obi) as Discovery Edition CD as part of the 'Why Pink Floyd?' campaign.

Animals



Label: EMI Music Japan Inc.

Catalog numbers:

TOCP-71141/71157 (on case spine)

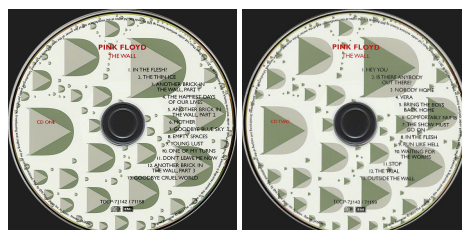
TOCP-71141/71157 (on CD)

Country of origin: Japan

Release date: September, 2011

Notes: Issued in a glossy gatefold cardboard sleeve with a 12 page re-designed booklet and Japanese insert. Digitally remastered by James Guthrie and Joel Plante at das boot recording in 2011. Includes CD text (band name, album title, song title, composer). No obi. v It was also sold separately (with obi) as Discovery Edition CD as part of the 'Why Pink Floyd?' campaign.

The Wall



Label: EMI Music Japan Inc.

Catalog numbers:

TOCP-71142-43 (on case spine)

TOCP-71142/71158 (on CD1)

TOCP-71143/71159 (on CD 2)

Country of origin: Japan

Release date: September, 2011

Notes: Issued in a glossy gatefold cardboard sleeve with a 24 page re-designed booklet and Japanese insert. Digitally remastered by James Guthrie and Joel Plante at das boot recording in 2011. Includes CD text (band name, album title, song title, composer). No obi. CD in plastic inner sleeve. It was also sold separately (with obi) as Discovery Edition CD as part of the 'Why Pink Floyd?' campaign.

The Final Cut



Label: EMI Music Japan Inc.

Catalog numbers:

TOCP-71144/71160 (on case spine)

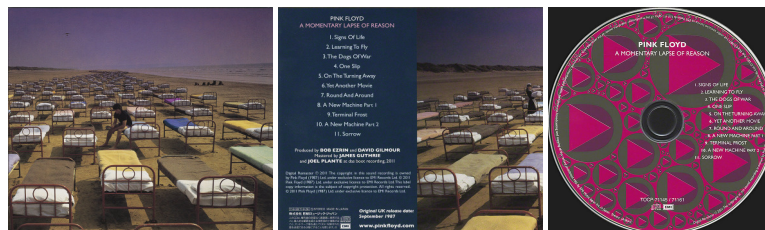
TOCP-71144/71160 (on CD)

Country of origin: Japan

Release date: September, 2011

Notes: Issued in a glossy gatefold cardboard sleeve with a 12 page re-designed booklet and Japanese insert. Digitally remastered by James Guthrie and Joel Plante at das boot recording in 2011. Includes CD text (band name, album title, song title, composer). No obi. CD in plastic inner sleeve. It was also sold separately (with obi) as Discovery Edition CD as part of the 'Why Pink Floyd?' campaign.

A Momentary Lapse of Reason



Label: EMI Music Japan Inc.

Catalog numbers:

TOCP-71145/71161 (on case spine)

TOCP-71145/71161 (on CD)

Country of origin: Japan

Release date: September, 2011

Notes: Issued in a glossy gatefold cardboard sleeve with a 12 page re-designed booklet and Japanese insert. Digitally remastered by James Guthrie and Joel Plante at das boot recording in 2011. Includes CD text (band name, album title, song title, composer). No obi. CD in plastic inner sleeve. The man on front cover has a mirror in his hand. It was also sold separately (with obi) as Discovery Edition CD as part of the 'Why Pink Floyd?' campaign.

The Division Bell



Label: EMI Music Japan Inc.

Catalog numbers:

TOCP-71146/71162 (on case spine)

TOCP-71146/71162 (on CD)

Country of origin: Japan

Release date: September, 2011

Notes: Issued in a glossy gatefold cardboard sleeve with a 12 page re-designed booklet and Japanese insert. Digitally remastered by James Guthrie and Joel Plante at das boot recording in 2011. Includes CD text (band name, album title, song title, composer). No obi. CD in plastic inner sleeve. It was also sold separately (with obi) as Discovery Edition CD as part of the 'Why Pink Floyd?' campaign.

PINK FLOYD CD DISCOGRAPHY

JAPAN Sampler

Tonite, Let's All Make Love in London



Label: Toshiba-EMI

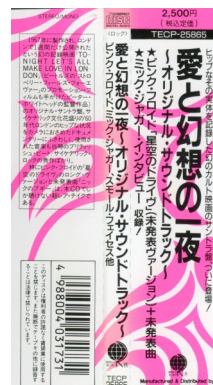
Catalog numbers:

TECP-25865 (on case spine and obi)

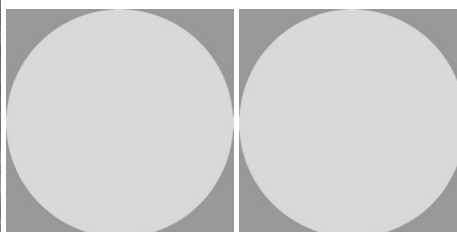
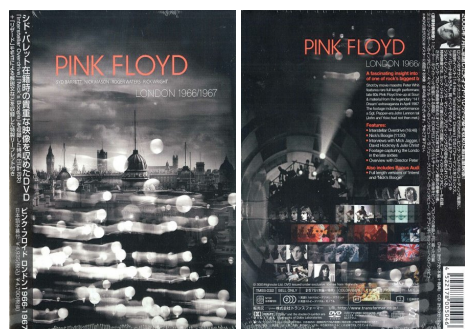
4 988004 031731 (barcode on obi)

Country of origin: Japan

Notes: Issued in a digipak with a 28 page Japanese booklet.



London 1966 / 1967



Label: Highnote

Catalog numbers:

TMSS-032 (on case spine and on obi spine)

4 522178 005046 (barcode on rear of obi)

TMSS-032, V-0604934JV and R0600633JV (on rear cover)

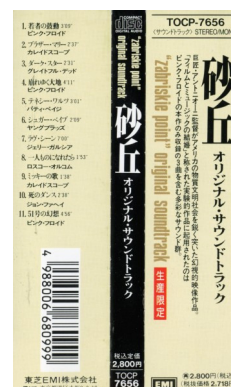
R0600633JV (on CD)

TMSS-032 and V-0604934JV (on DVD)

Country of origin: Japan

Notes: CD + DVD issued in a digipak with a 8 page fold out booklet and a 2 page insert.

Zabriskie Point



Label: Toshiba-EMI

Catalog numbers:

TOCP-7656 (on case spine and obi)

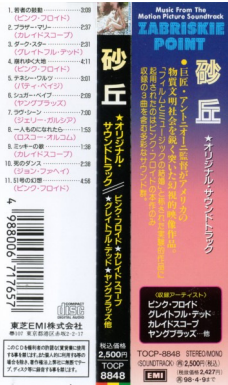
4 988006 680999 (barcode on obi)

Country of origin: Japan

Zabriskie Point



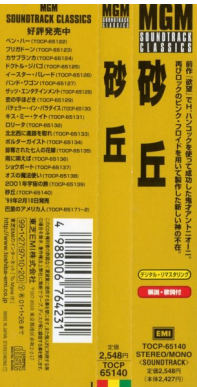
Label: Toshiba-EMI
Catalog numbers:
TOCP-8848 (on case spine and obi)
4 988006 717657 (barcode on obi)
Country of origin: Japan



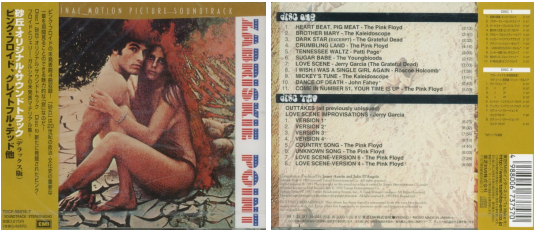
Zabriskie Point



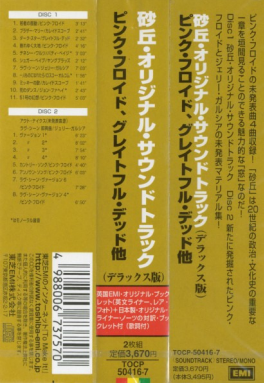
Label: Toshiba-EMI
Catalog numbers:
TOCP-65140 (on case spine and obi)
4 988006 764231 (barcode on obi)
Country of origin: Japan



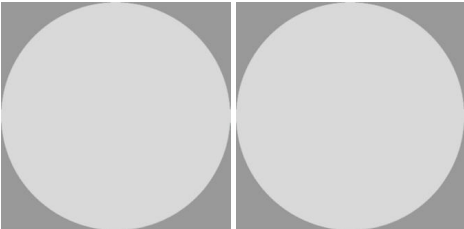
Zabriskie Point



Label: Toshiba-EMI
Catalog numbers:
TOCP-50416.7 (on case spine and obi)
4 988006 737570 (barcode on obi)
Country of origin: Japan



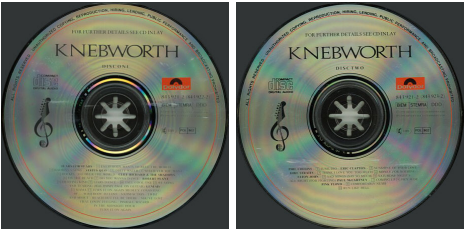
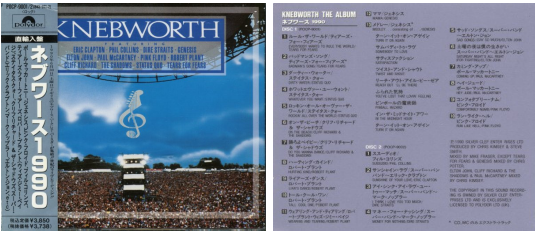
Zabriskie Point



Label: Sony Music Japan
Catalog numbers:
SICP 2707-8 (on case spine and obi)
4 547366 053906 (barcode on obi)
Country of origin: Japan
Notes: 2010 reissue.



Knebworth the Album



Label: Polydor
Catalog numbers:
POCP-9001/2 (843 921-2) (on obi)
4 988005 069993 (barcode on obi)
843 921-2 (843 922-2), POL 902 and LC 0309 (on CD1)
843 921-2 (843 923-2) POL 902 and LC 0309 (on CD2)
Country of origin: Artwork and CDs: no info (European issue), obi: Japan
Notes: European version of the CD with a long style obi.



Live at Knebworth (Knebworth the Album)



Additional inserts:



Booklet

Japanese b/w booklet

Programme replica

Ticket replica

Label: eagle records / WARD RECORDS / COLUMBIA MUSIC ENTERTAINMENT

Catalog numbers:

VQCD-10171/2 (on obi spine and on rear obi)

4 580142 346502 (barcode on rear obi)

VQCD-10171 (on CD1)

VQCD-10172 (on CD2)

Country of origin: Japan

Release date: 17.3.2010

Notes: Issued in a thick double DVD Amaray case with a 16 page booklet, a Japanese 8 page b/w booklet, a 24 page concert programme replica and a ticket replica. SHM-CDs. 4 x "S SHM-CD" printed on centre ring of the CDs. "MADE IN JAPAN" printed on the CDs and on rear Obi. "... ¥3,200 (... ¥3,048)" printed on obi. Japanese explanation of SHM-CDs printed on inner obi (shown).

An Introduction to Syd Barrett



Label: EMI

Catalog numbers:

TOCP-70882 (on sleeve spine, on rear cover and on obi)

4 988006 883222 (barcode on obi)

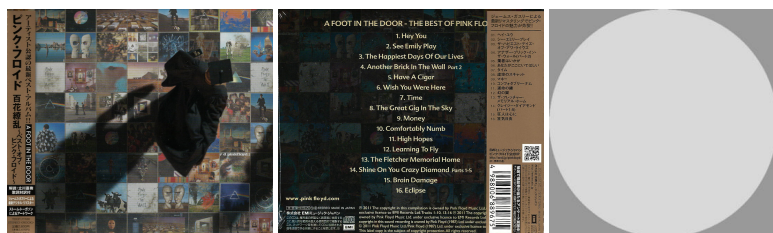
TOCP-54056 (on CD)

Country of origin: Japan

Release date: 17.11.2010

Notes: Issued in a fold out cardboard sleeve with a 24 page booklet and a Japanese 16 pane b/w fold out insert. "Mfd. by EMI Music Japan Inc. in Japan." printed on the CD. "MADE IN JAPAN" printed on obi and rear cover. "...2,500 ... (... 2,381 ...)" printed on obi.

A Foot In The Door



Label: EMI

Catalog numbers:

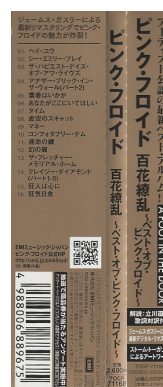
TOCP 71168 (on spine)

4 988006 889675 (barcode on obi)

Country of origin: Japan

Release date: November, 9th 2011

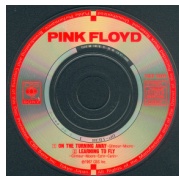
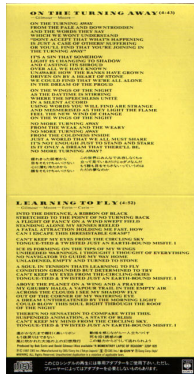
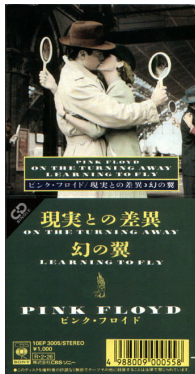
Notes: Issued in a gatefold cardboard sleeve with an 8 page booklet and an obi. Digitally remastered by James Guthrie and Joel Plante at das boot recording in 2011. Includes CD text.



PINK FLOYD CD DISCOGRAPHY

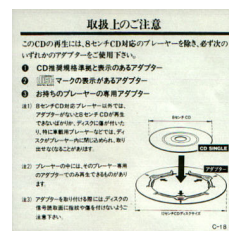
JAPAN Singles

On the Turning Away - 3 inch single



Label: Sony
Catalog numbers:
10EP 3005 (on spine)
4 988009 000558 (barcode)
10EP 3005 (on CD)
Release date: 1987
Notes: 3" CD in long sleeve.

additional sheet



PINK FLOYD CD DISCOGRAPHY

JAPAN Promotional Releases

A Momentary Lapse of Reason



Label: CBS/Sony

Catalog numbers:

32DP 820 (on case spine)

T4988 009 56005 2 (barcode on rear cover, no barcode on slipcase)

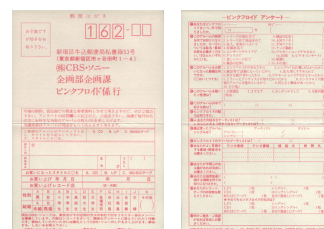
32DP820 (on slipcase and rear cover)

32DP 820 (on CD)

Country of origin: Japan

Notes: Promotional issue. Released in a standard jewel case (obi wraps the jewel case) with a 24 page Japanese booklet and a slipcase. Slipcase without barcode. Includes the full copy of the album.

Some issues included a double-sided printed reply card from the record company. A survey to gather info from the consumers. Folded once to fit in the set, size: 10x14.8 cm (shown right).



A Momentary Lapse of Reason



Label: CBS/Sony

Catalog numbers:

XDDP 93004 (on rear)

XDDP 93004 (on CD)

Country of origin: Japan

Notes: Promotional issue in a cardboard slipcase (without booklet). "NOT FOR SALE" Printed on the CD and rear cover. Includes the full copy of the album.

Fate of Circle



Label: Sony

Catalog numbers:

XDCS 93138-9 (on rear cover)

XDCS 93138 (on CD 1)

XDCS 93139 (on CD 2)

Country of origin: Japan

Notes: 24-track promo-only 2CD set, features selections from The Division Bell plus 2 live tracks and selected songs from the Pink Floyd back catalogue and solo albums of the band members. Issued in a digipak with a 12 page Japanese booklet but without obi.

Includes:

Disc 1: Shine On You Crazy Diamond / What Do You Want From Me / Another Brick In The Wall (Part II) / A Great Day For Freedom / Wish You Were Here / Us & Them / Take It Back / Time / Money / One Of These Days / On The Turning Away / High Hopes

Disc 2: What God Wants (Part 1) / Mediterranean C / There's No Way Out Of Here / Malta / 5:01 AM (The Pros and Cons of Hitch Hiking Part 10) / All Lovers Are Deranged / Hot River / Radio Waves / Lie For A Lie / Mihal's / Pink's Song / The Tide Is Turning (After Live Aid)